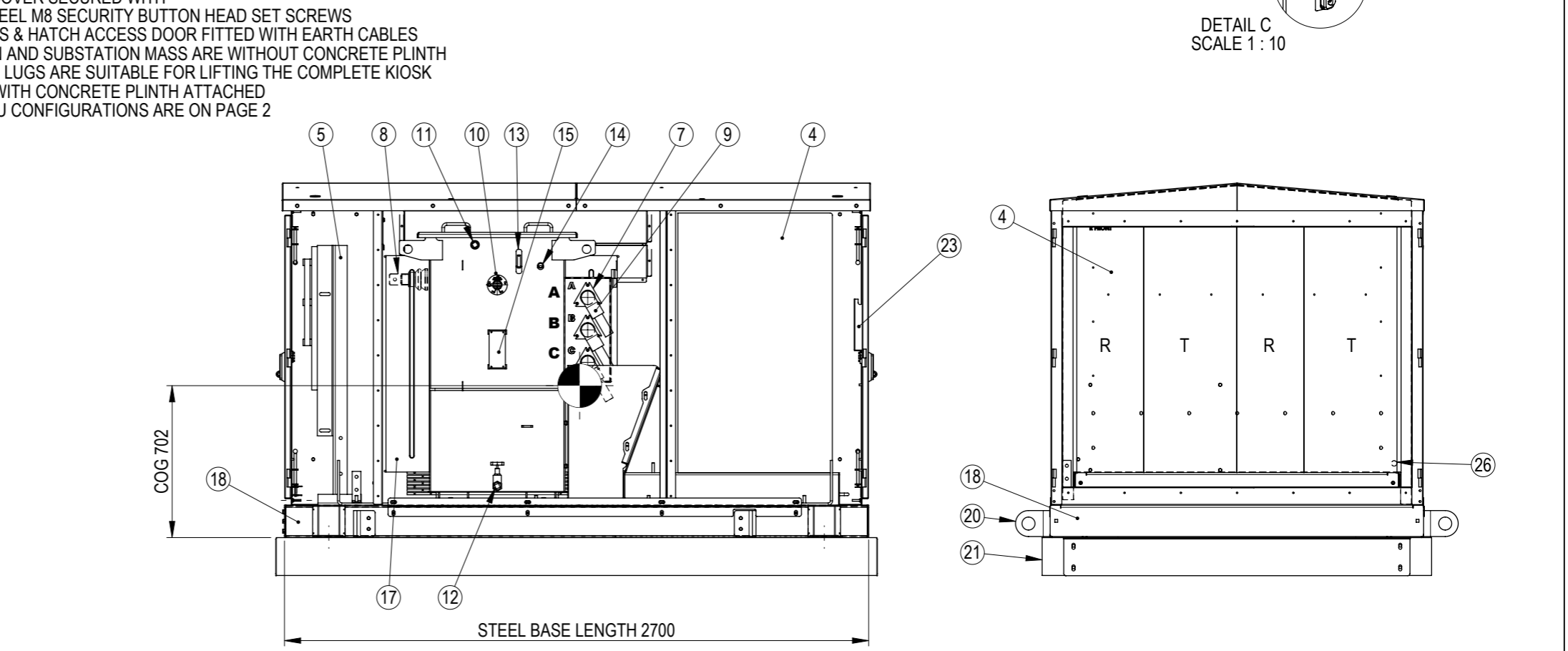
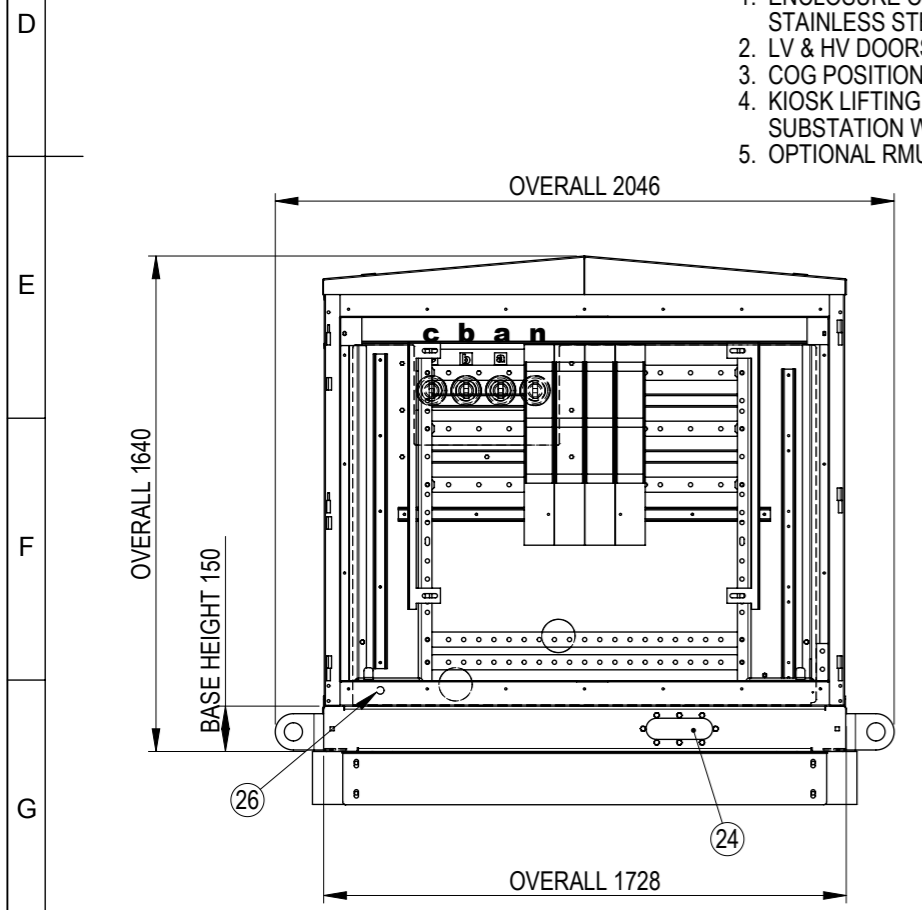


ITEM	DESCRIPTION
1	KIOSK ENCLOSURE 4 WAY 500kVA ARC-FAULT
2	HINGED ACCESS HATCH TO TRANSFORMER FITTINGS
3	MAIN KIOSK EARTH BAR 40 x 10mm TINNED Cu
4	RMU - 4 WAY SIEMENS 8DJH RTRT (SHOWN)
5	LV SWITCHGEAR (SAMPLE SHOWN)
6	TRANSFORMER
7	HV BUSHING WELL 200A 150kV BIL
8	LV BUSHINGS ESAA No.73 1050A (SMALL SHED, 1-Ø 14 HOLE)
9	DEADBREAK INSERTS + ELBOWS + CABLES CONNECTING TRANSFORMER TO RING MAIN UNIT
10	TAPSWITCH HANDLE
11	25NB OIL FILLER SOCKET & PLUG
12	25NB OIL DRAIN VALVE & PLUG
13	OIL LEVEL GAUGE
14	THERMOMETER POCKET
15	TRANSFORMER RATING PLATE
16	LIFTING LUG FOR TRANSFORMER
17	FINWALL RADIATOR
18	ARC-FAULT BASE 500kVA
19	ARC-FAULT CHIMNEY SIEMENS
20	REMOVABLE LIFTING LUG
21	CONCRETE PLINTH (OPTIONAL)
22	REMOTE FAULT INDICATORS (OPTIONAL)
23	DOCUMENT HOLDER & KIOSK RATING PLATE
24	PROVISION FOR GENERATOR CABLE ENTRY
25	PROVISION FOR ANTENNA 4-Ø 18
26	CABLE CONDUIT 25mm HV - LV SECT.

- NOTES**
- ENCLOSURE COVER SECURED WITH STAINLESS STEEL M8 SECURITY BUTTON HEAD SET SCREWS
 - LV & HV DOORS & HATCH ACCESS DOOR FITTED WITH EARTH CABLES
 - COG POSITION AND SUBSTATION MASS ARE WITHOUT CONCRETE PLINTH
 - KIOSK LIFTING LUGS ARE SUITABLE FOR LIFTING THE COMPLETE KIOSK SUBSTATION WITH CONCRETE PLINTH ATTACHED
 - OPTIONAL RMU CONFIGURATIONS ARE ON PAGE 2



REV	DESCRIPTION	AUTHORITY	DRAWN	DATE	APPD	DATE
A	INITIAL RELEASE	INITIAL RELEASE	MN	26/07/2019	PJ	26/07/2019

REVISION INFORMATION

NAME	SIGNATURE	DATE	SCALE AT A3 = 1:25
DRAWN: MN		26/07/2019	
CHECKED: PJ		26/07/2019	
APPROVED: PJ		26/07/2019	

DO NOT SCALE DRAWING

WEIGHT: SEE TABLE FINISH: UNLESS SPECIFIED: DIMENSIONS ARE IN mm

MATERIAL: - TOLERANCES: LINEAR: X = ± 1 ANGULAR: X = ± 0.5°
 .X = ± 0.5 .XX = ± 0.1

TITLE: GENERAL ARRANGEMENT 1
 500kVA ARC-FAULT KIOSK
 UP TO 4 WAY RING MAIN SUBSTATION

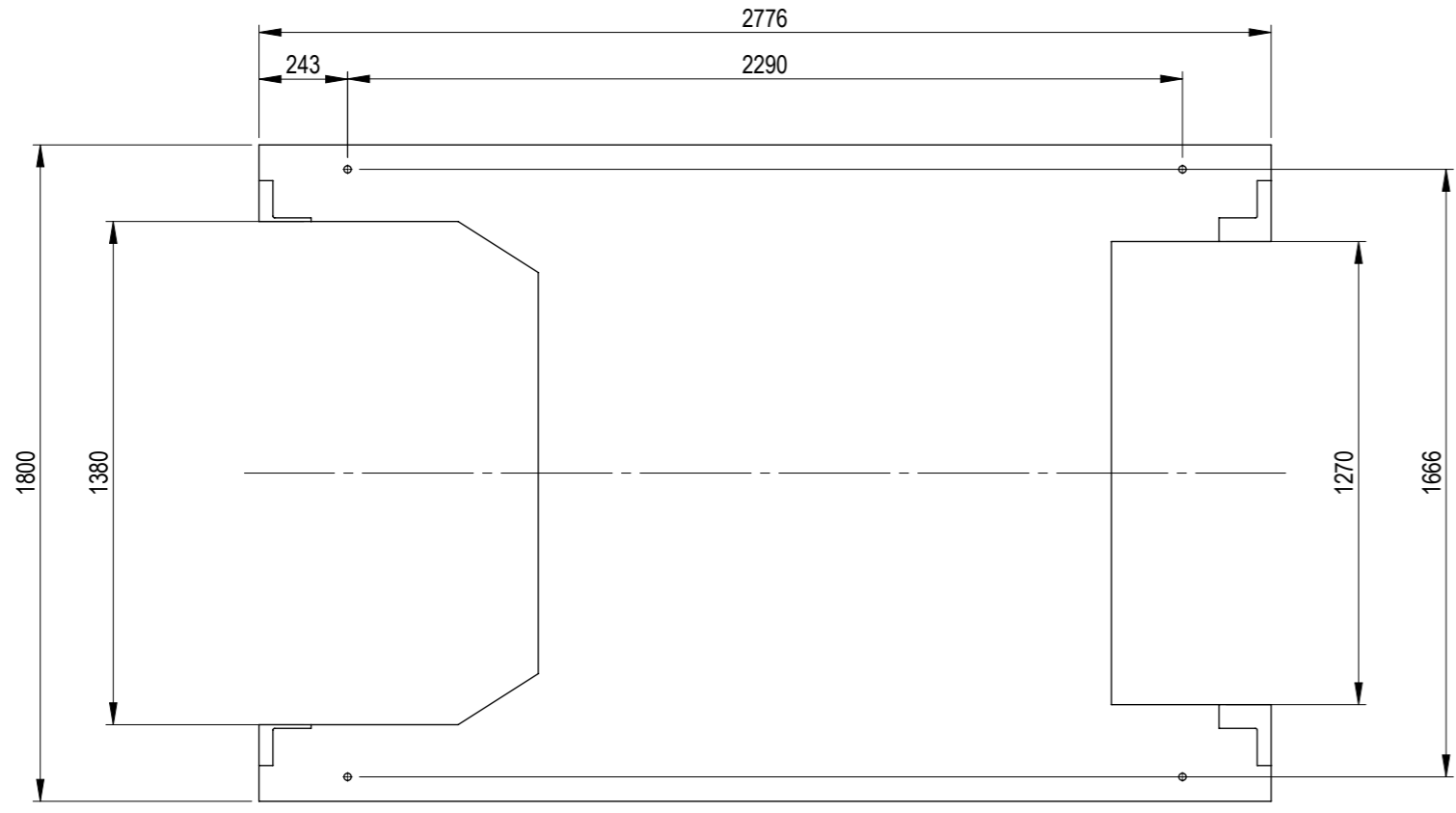
SIEMENS 8DJH (11 kV OR 22 kV)

Copyright © ETEL Limited. All rights reserved.
 No part of this document may be reproduced nor information contained hereon divulged to third parties without written consent from ETEL Limited.

ETEL
Distribution Transformers

SHEET	DWG NO.	REV.
1 OF 4	915.0500.0001	A

	1	2	3	4	5	6	7	8	9	10		
A				RATING	OIL LITRES	UNTANKING MASS kg	TRANSFORMER MASS kg	ENCLOSURE MASS kg	BASE & CHIMNEY MASS kg	RMU 4 WAY RTRT MASS kg	LV SWITCHBOARD MASS kg	SUBSTATION WITHOUT CONCRETE PLINTH MASS kg
B				500kVA 22kV Dzn2	610	1290	2310	460	370	470	100	3710
				500kVA 11kV Dyn11	640	1040	2080	460	370	470	100	3480
				300kVA 22kV Dzn2	620	1030	1950	460	370	470	100	3350
				300kVA 11kV Dyn11	715	740	1750	460	370	470	100	3150
				200kVA 22kV Dzn2	545	810	1590	460	370	470	100	2990
C				200kVA 11kV Dyn11	610	570	1410	460	370	470	100	2810
				100kVA 22kV Dzn2	310	540	1030	460	370	470	100	2430
				100kVA 11kV Dyn11	420	380	960	460	370	470	100	2360

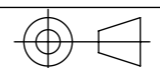


CONCRETE PLINTH

SUBSTATION MASSES EXCLUDE CONCRETE PLINTH
ADDITIONAL MASS OF CONCRETE PLINTH 1640 kg

OPTIONAL RMU CONFIGURATIONS AVAILABLE *	MASS kg
RTRT	470
RLRL	460
RTRR	430
RLRR	430
RTR	330
RLR	320

* MAXIMUM SUITABLE DIMENSION - 1480W x 1200H x 775D

	NAME	SIGNATURE	DATE	SCALE AT A3 = 1:20
DRAWN	MN		26/07/2019	 DO NOT SCALE DRAWING
CHECKED	PJ		26/07/2019	
APPROVED	PJ		26/07/2019	
WEIGHT:		FINISH:		UNLESS SPECIFIED: DIMENSIONS ARE IN mm TOLERANCES: LINEAR: X = ± 1 X = ± 0.5° .X = ± 0.5 .XX = ± 0.1
-		-		
MATERIAL:				
-				

TITLE: GENERAL ARRANGEMENT 2
500kVA ARC-FAULT KIOSK
UP TO 4 WAY RING MAIN SUBSTATION

SIEMENS 8DJH (11 kV OR 22 kV)

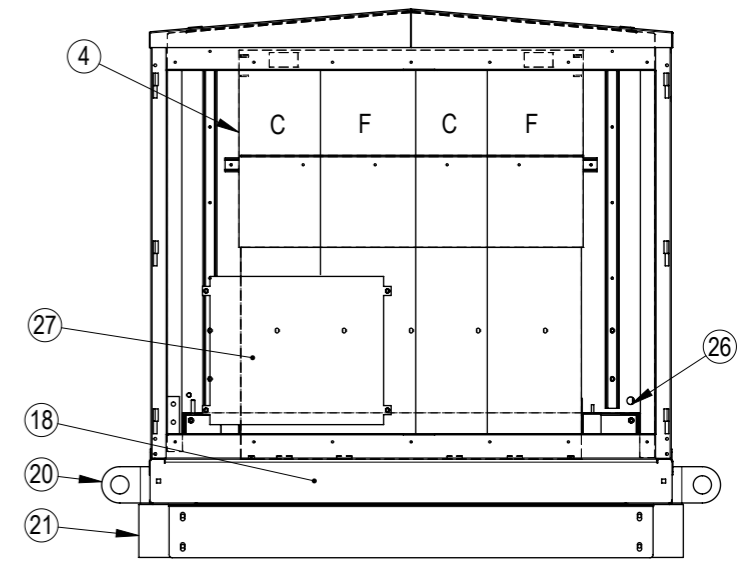
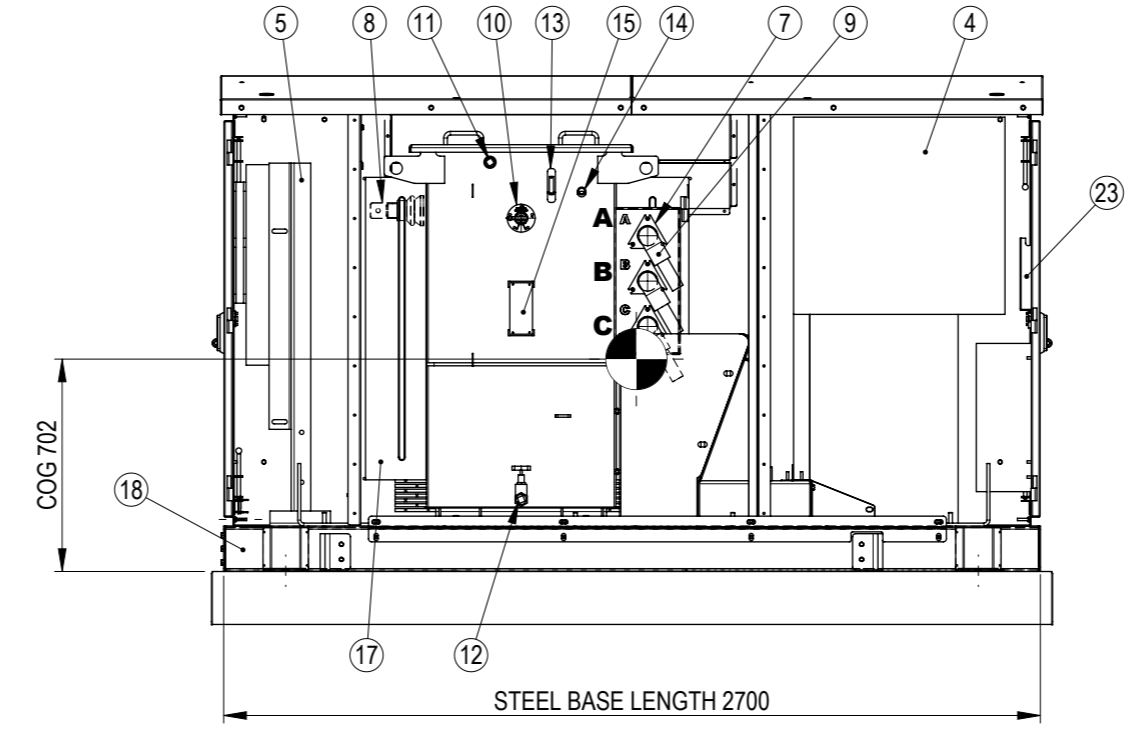
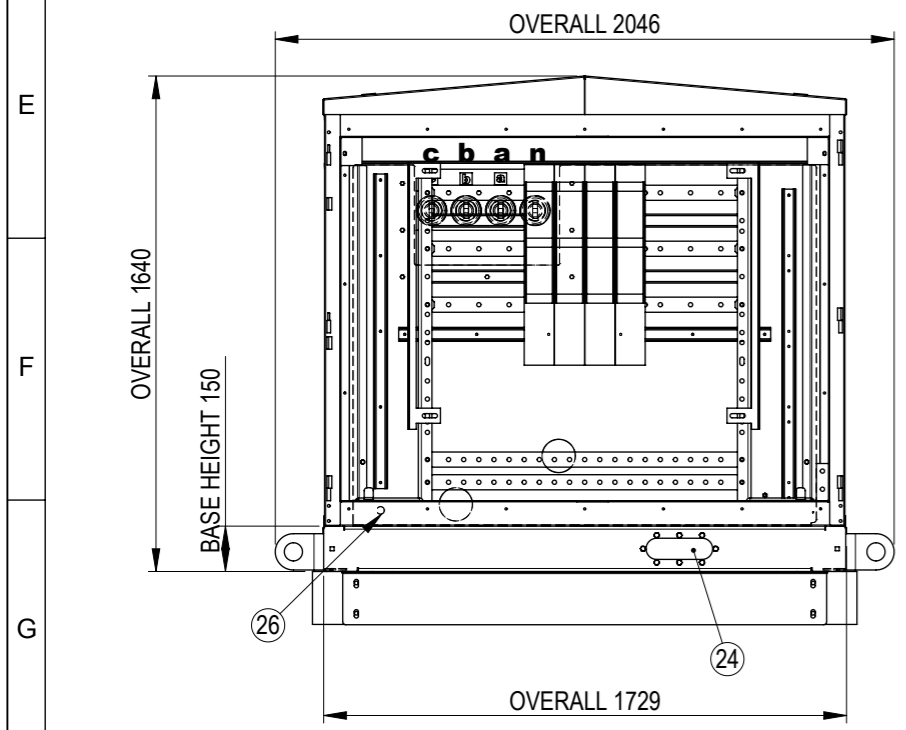
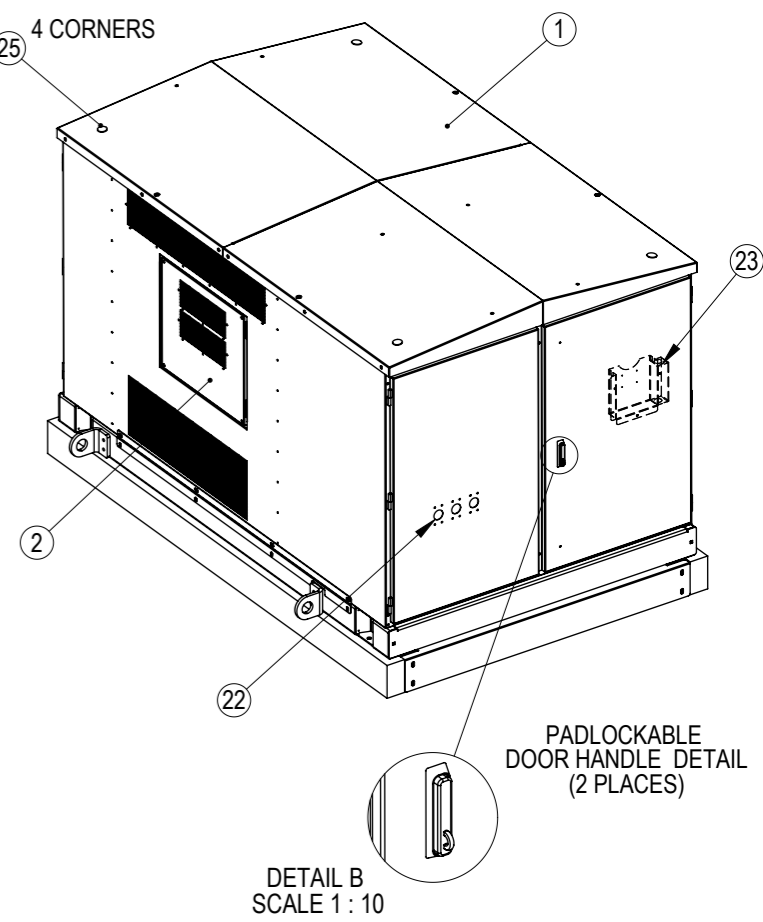
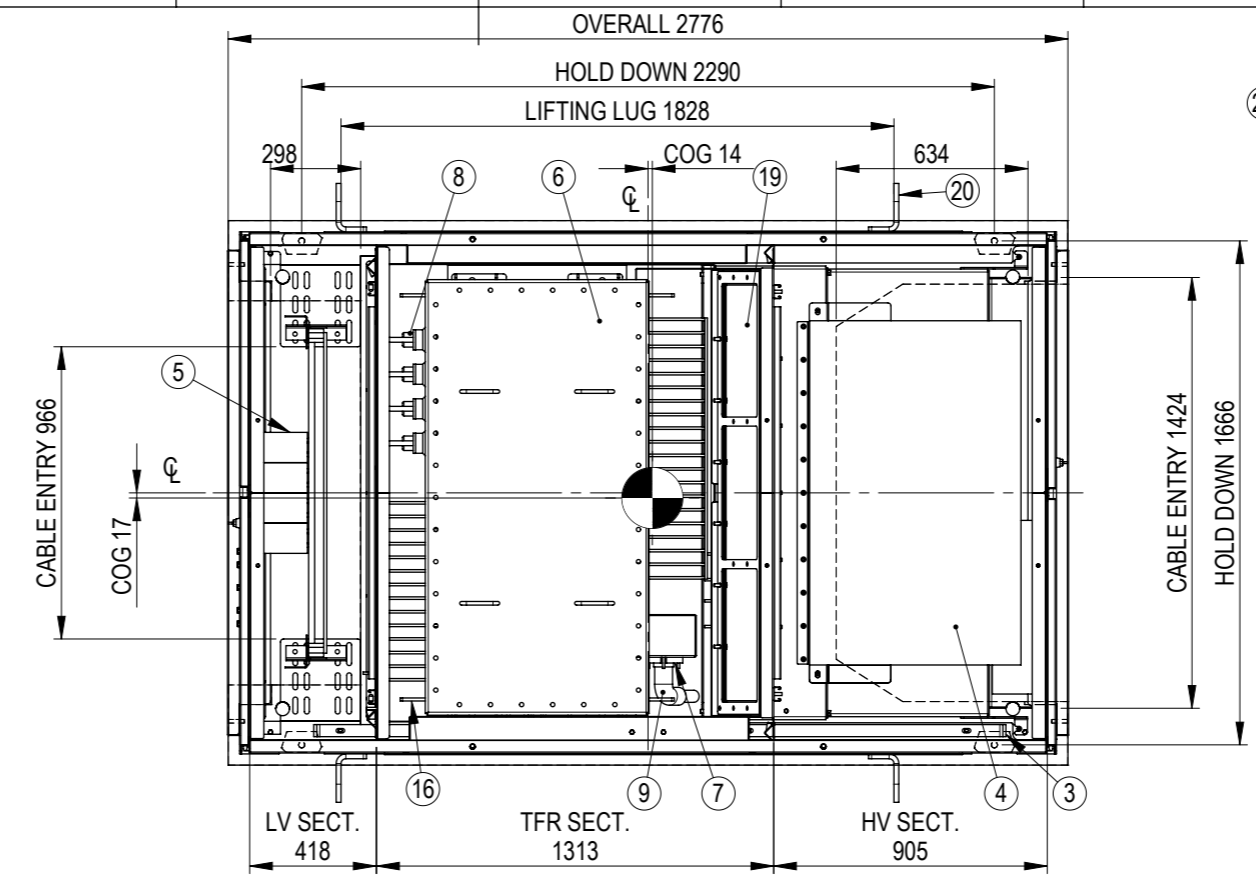
Copyright © ETEL Limited. All rights reserved.
No part of this document may be reproduced nor information contained hereon
divulged to third parties without written consent from ETEL Limited.

ETEL
Distribution Transformers

SHEET	DWG NO.	REV.
2 OF 4	915.0500.0001	A

ITEM	DESCRIPTION
1	KIOSK ENCLOSURE 4 WAY 500kVA ARC-FAULT
2	HINGED ACCESS HATCH TO TRANSFORMER FITTINGS
3	MAIN KIOSK EARTH BAR 40 x 10mm TINNED Cu
4	RMU - 4 WAY ABB SAFELINK2 - CFCF (SHOWN)
5	LV SWITCHGEAR (SAMPLE SHOWN)
6	TRANSFORMER
7	HV BUSHING WELL 200A 150kV BIL
8	LV BUSHINGS ESAA No.73 1050A (SMALL SHED, 1-Ø 14 HOLE)
9	DEADBREAK INSERTS + ELBOWS + CABLES CONNECTING TRANSFORMER TO RING MAIN UNIT
10	TAPSWITCH HANDLE
11	25NB OIL FILLER SOCKET & PLUG
12	25NB OIL DRAIN VALVE & PLUG
13	OIL LEVEL GAUGE
14	THERMOMETER POCKET
15	TRANSFORMER RATING PLATE
16	LIFTING LUG FOR TRANSFORMER
17	FINWALL RADIATOR
18	ARC-FAULT BASE 500kVA
19	ARC-FAULT CHIMNEY ABB
20	REMOVABLE LIFTING LUG
21	CONCRETE PLINTH (OPTIONAL)
22	REMOTE FAULT INDICATORS (OPTIONAL)
23	DOCUMENT HOLDER & KIOSK RATING PLATE
24	PROVISION FOR GENERATOR CABLE ENTRY
25	PROVISION FOR ANTENNA 4-Ø 18
26	CABLE CONDUIT 25mm HV-LV SECT.
27	PROVISION FOR RMU CONTROL PANEL

- NOTES**
- ENCLOSURE COVER SECURED WITH STAINLESS STEEL M8 SECURITY BUTTON HEAD SET SCREWS
 - LV & HV DOORS & HATCH ACCESS DOOR FITTED WITH EARTH CABLES
 - COG POSITION AND SUBSTATION MASS ARE WITHOUT CONCRETE PLINTH
 - KIOSK LIFTING LUGS ARE SUITABLE FOR LIFTING THE COMPLETE KIOSK SUBSTATION WITH CONCRETE PLINTH ATTACHED
 - OPTIONAL RMU CONFIGURATIONS ARE ON PAGE 2



NAME	SIGNATURE	DATE	SCALE AT A3 = 1:25
DRAWN	MN	26/07/2019	
CHECKED	PJ	26/07/2019	
APPROVED	PJ	26/07/2019	
WEIGHT:	FINISH:	UNLESS SPECIFIED: DIMENSIONS ARE IN mm	
SEE TABLE		TOLERANCES: LINEAR: X = ± 1 ANGULAR: X = ± 0.5° .X = ± 0.5 .XX = ± 0.1	
MATERIAL:			
-			

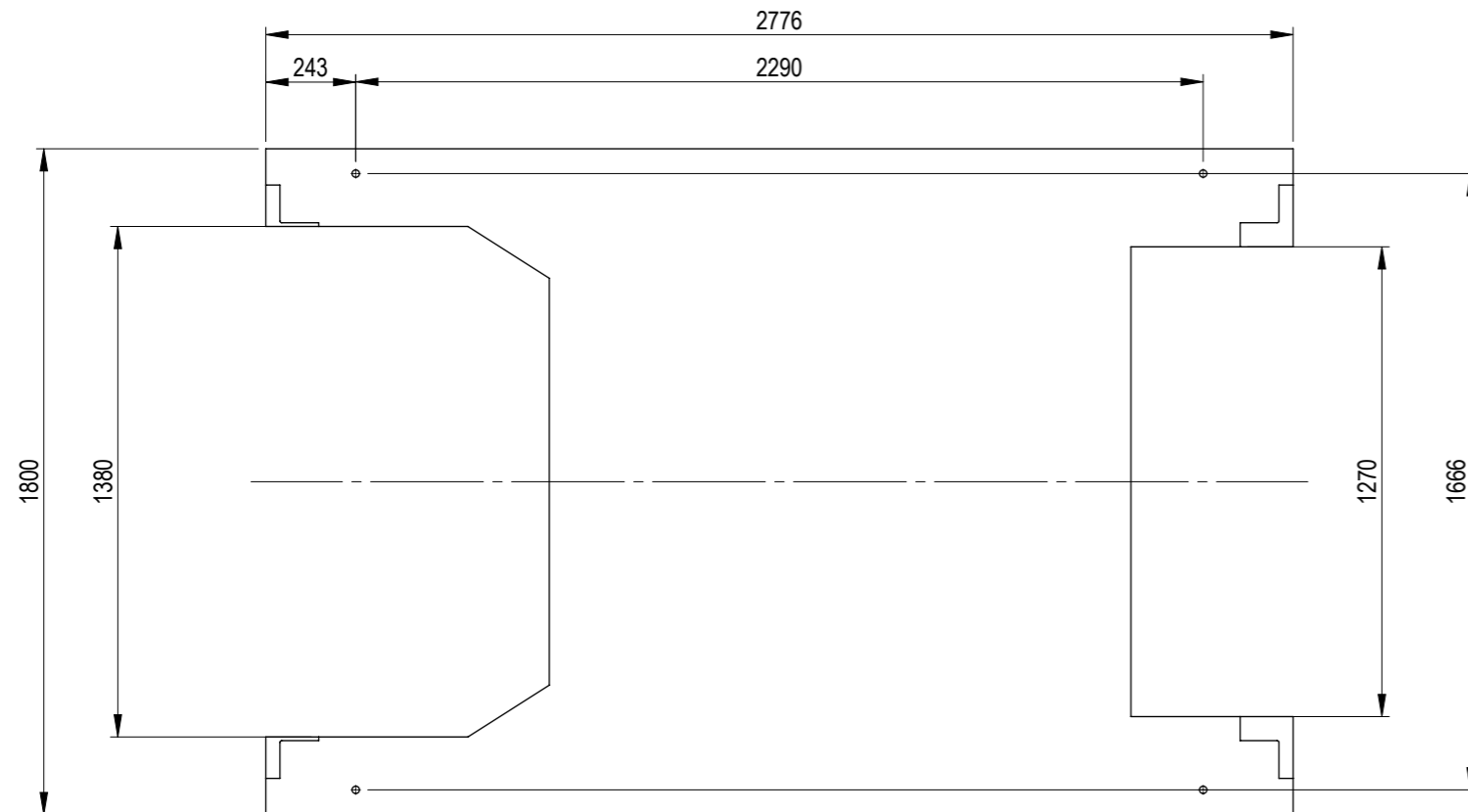
TITLE:
GENERAL ARRANGEMENT 3
500kVA ARC-FAULT KIOSK
UP TO 4 WAY RING MAIN SUBSTATION
ABB SAFE-LINK2 (11kV ONLY)

Copyright © ETEL Limited. All rights reserved.
 No part of this document may be reproduced nor information contained hereon divulged to third parties without written consent from ETEL Limited.

SHEET	DWG NO.	REV.
3 OF 4	915.0500.0001	A

	1	2	3	4	5	6	7	8	9	10		
A				RATING	OIL LITRES	UNTANKING MASS kg	TRANSFORMER MASS kg	ENCLOSURE MASS kg	BASE & CHIMNEY MASS kg	RMU 4 WAY CFCF MASS kg	LV SWITCHBOARD MASS kg	SUBSTATION WITHOUT CONCRETE PLINTH MASS kg
B				500kVA 11kV Dyn11	640	1040	2080	460	370	415	100	3425
				300kVA 11kV Dyn11	715	740	1750	460	370	415	100	3095
				200kVA 11kV Dyn11	610	570	1410	460	370	415	100	2755
				100kVA 11kV Dyn11	420	380	960	460	370	415	100	2305

SUBSTATION MASSES EXCLUDE CONCRETE PLINTH
ADDITIONAL MASS OF CONCRETE PLINTH 1640 kg



OPTIONAL RMU CONFIGURATIONS AVAILABLE	MASS kg
CFCF	415
CFCC	350
CFC	285

H	NAME	SIGNATURE	DATE	SCALE AT A3 = 1:20	GENERAL ARRANGEMENT 4 500kVA ARC-FAULT KIOSK UP TO 4 WAY RING MAIN SUBSTATION ABB SAFE-LINK2 (11kV ONLY) <small>Copyright © ETEL Limited. All rights reserved. No part of this document may be reproduced nor information contained hereon divulged to third parties without written consent from ETEL Limited.</small>		
	DRAWN	MN	26/07/2019				
	CHECKED	PJ	26/07/2019	DO NOT SCALE DRAWING			
	APPROVED	PJ	26/07/2019	UNLESS SPECIFIED: DIMENSIONS ARE IN mm			
WEIGHT:		FINISH:		TOLERANCES:	SHEET 4 OF 4	DWG NO. 915.0500.0001	REV. A
-		-		LINEAR: X = ± 1 .X = ± 0.5 .XX = ± 0.1 ANGULAR: X = ± 0.5°			