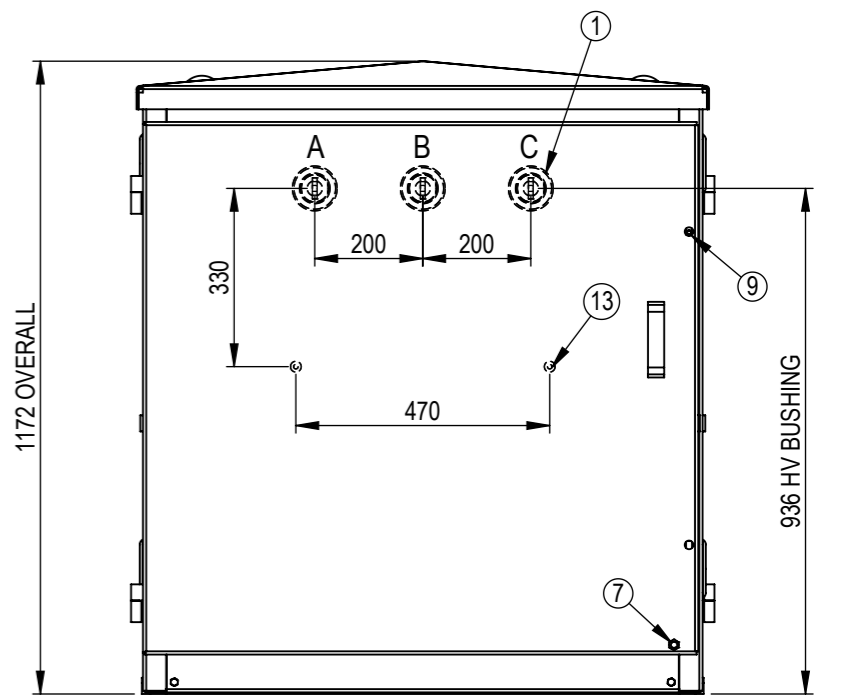
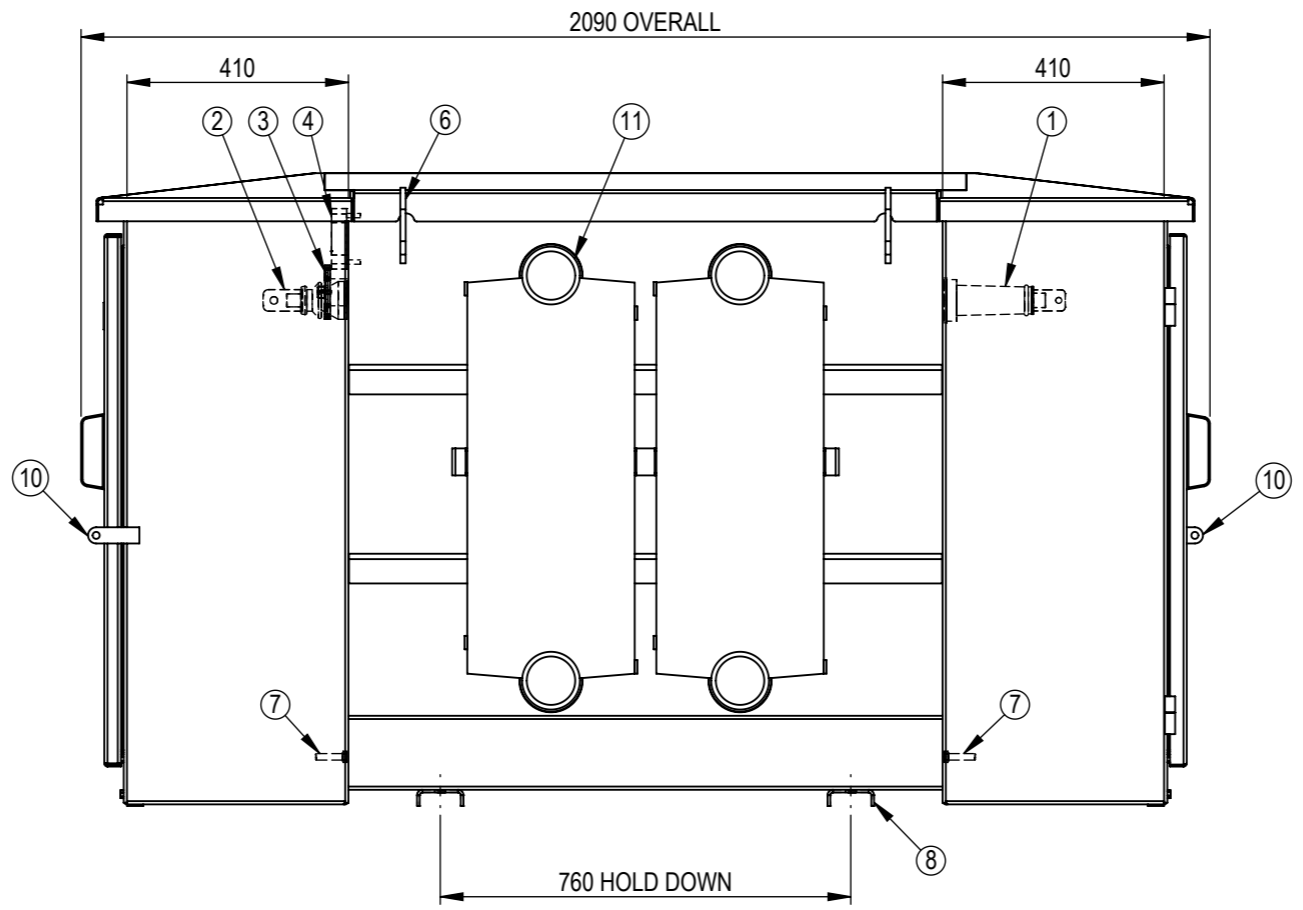
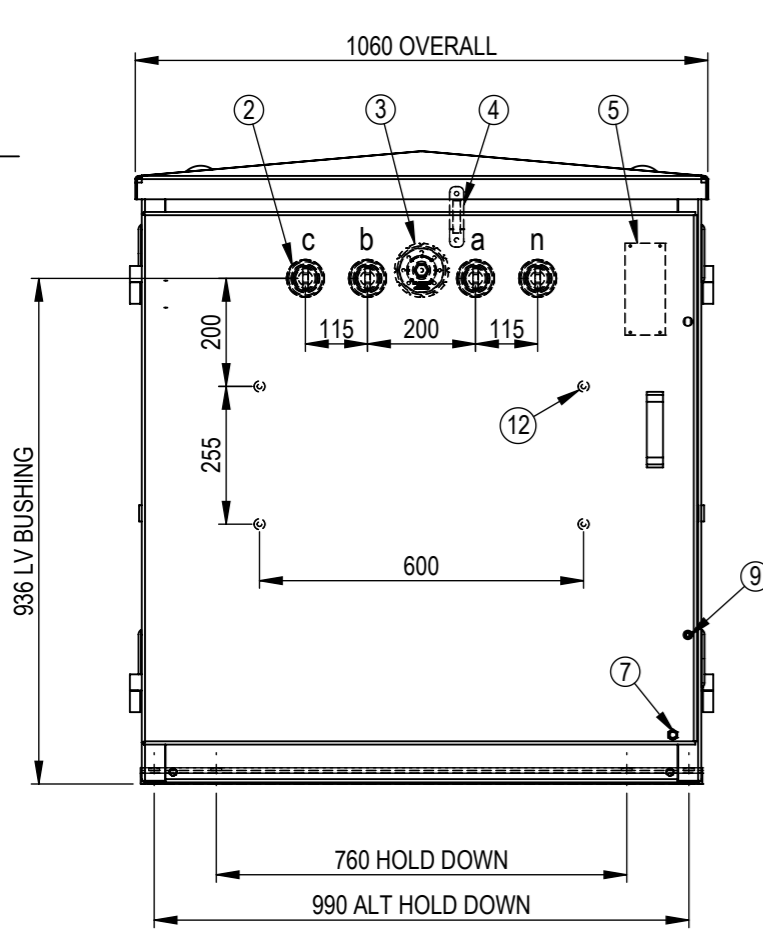


ITEM	DESCRIPTION
1	HV BUSHING CB 12kV 2Pce M10 Cu 160A
2	LV BUSHING, No. 72, 3.6kV, 500A, 14mm HOLE
3	TAPSWITCH HANDLE
4	OIL LEVEL GAUGE
5	RATING PLATE (INSIDE LV DOOR)
6	LIFTING LUG
7	EARTH STUD M12 SS
8	MOUNTING CHANNEL BASE
9	DOOR ALLEN HEAD BOLTS & RUBBER PLUGS
10	PADLOCKABLE HINGED ACCESS DOOR
11	COOLING RADIATORS
12	LV SWITCHBOARD BRACKET, M10 x 20mm LONG NUTS
13	HV SWITCHBOARD BRACKET, M10 x 20mm LONG NUTS

kVA	OIL LITRES	UNTANKING MASS (kg)	APPROX TOTAL MASS (kg)
300	400	770	1590



NAME	SIGNATURE	DATE	SCALE AT A3 = 1:14	TITLE:
DRAWN: SL		16/10/2017		GENERAL ARRANGEMENT 300kVA 3Ph PADMOUNT 11kV / 415-240V Dyn11
CHECKED: JS		17/10/2017		
APPROVED: JS		17/10/2017		
WEIGHT: -		FINISH: -		UNLESS SPECIFIED: DIMENSIONS ARE IN mm
MATERIAL: -				TOLERANCES: LINEAR: X = ± 1 ANGULAR: X = ± 0.5° .X = ± 0.5 .XX = ± 0.1

REV	DESCRIPTION	AUTHORITY	DRAWN	DATE	APPD	DATE
A	INITIAL RELEASE	INITIAL RELEASE	SL	16/10/2017	JS	17/10/2017

REVISION INFORMATION

Copyright © ETEL Limited. All rights reserved.
 No part of this document may be reproduced nor information contained hereon divulged to third parties without written consent from ETEL Limited.

ETEL
Distribution Transformers

SHEET	DWG NO.	REV.
1 OF 1	904.0300.3408	A