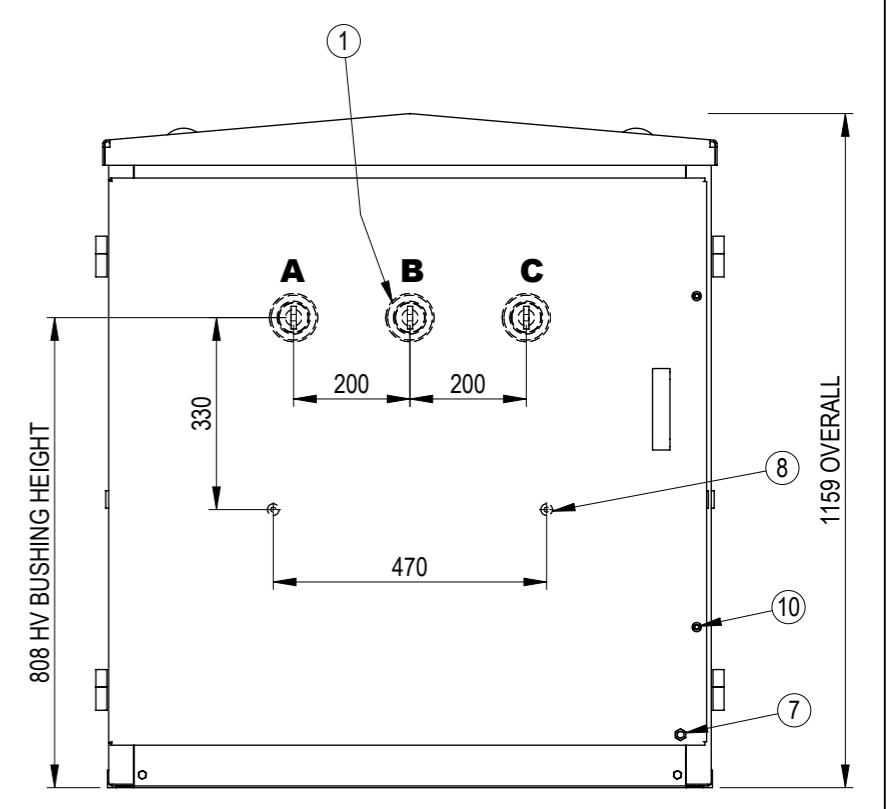
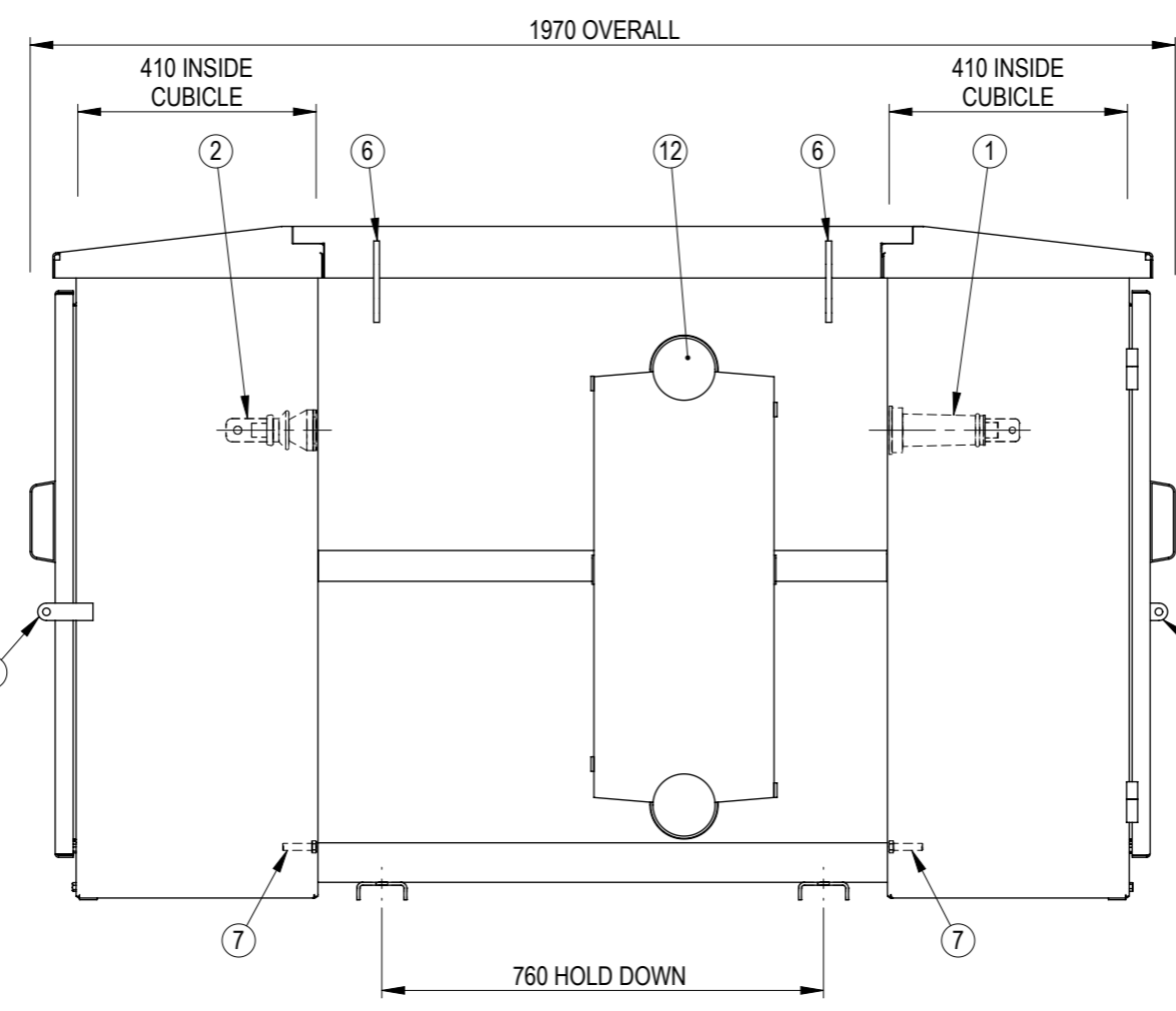
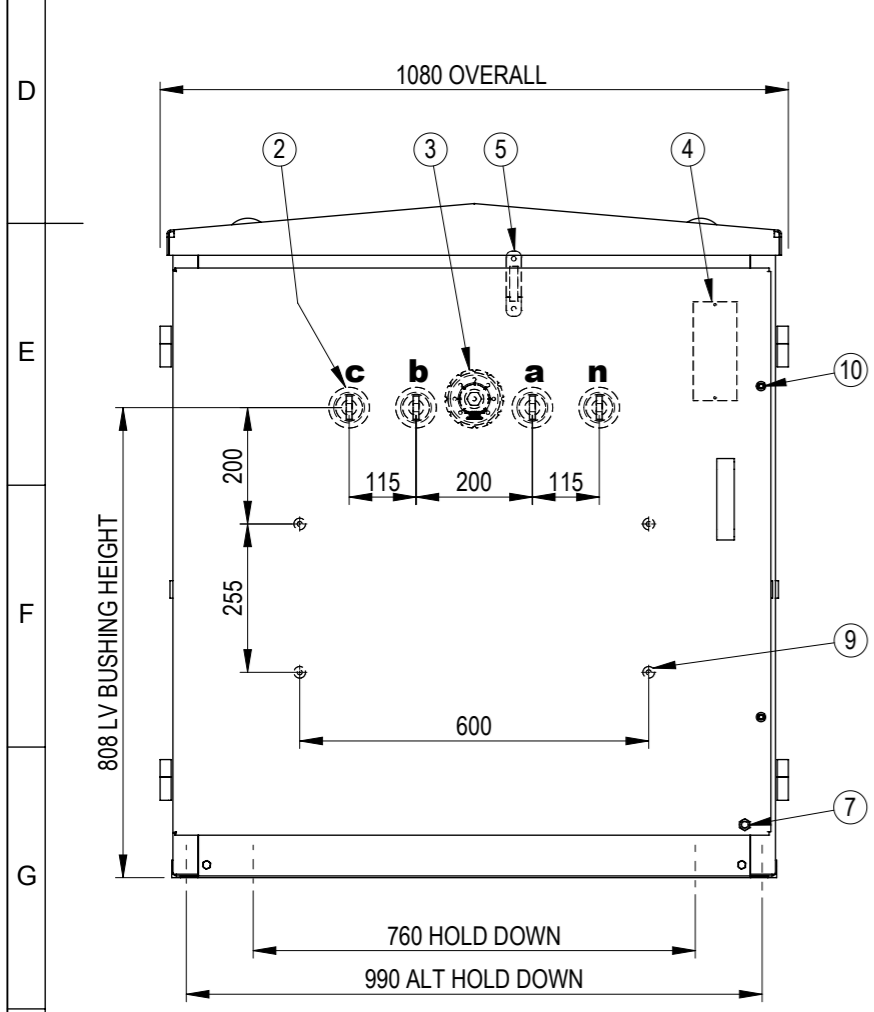


ITEM	DESCRIPTION
1	HV BUSHING CABLEBOX, 2 Pce, 11000V, 160A
2	LV BUSHING ESAA No. 72, 2 Pce, 3300V, 500A
3	TAPSWITCH HANDLE
4	RATING PLATE ( POSITIONED INSIDE LV DOOR)
5	OIL LEVEL GAUGE
6	LIFTING LUG
7	EARTH STUD M12 S/STEEL
8	HV SWITCHBOARD BKT. M10 x 20mm LONG NUTS
9	LV SWITCHBOARD BKT. M10 x 20mm LONG NUTS
10	DOOR ALLEN KEY BOLT & RUBBER PLUG
11	PADLOCKABLE HINGED ACCESS DOOR
12	COOLING RADIATOR

APPROXIMATE MASSES		kg
OIL (353Litres)		310
UNTANKING MASS		551
<b>TOTAL MASS</b>		<b>1230</b>



REV	DESCRIPTION	AUTHORITY	DRAWN	DATE	APPD	DATE
A	INITIAL RELEASE	INITIAL RELEASE	SL	26/10/2017	JS	30/10/2017

**REVISION INFORMATION**

NAME	SIGNATURE	DATE	SCALE AT A3 = 1:13
DRAWN: SL		26/10/2017	
CHECKED: JS		30/10/2017	
APPROVED: JS		30/10/2017	

DO NOT SCALE DRAWING

WEIGHT: - FINISH: -

UNLESS SPECIFIED: DIMENSIONS ARE IN mm

TOLERANCES:  
 LINEAR: X = ± 1 ANGULAR: X = ± 0.5°  
 .X = ± 0.5  
 .XX = ± 0.1

**GENERAL ARRANGEMENT**  
**200kVA 3Ph PADMOUNT TRANSFORMER**  
**11kV / 415 - 240V Dyn11**

Copyright © ETEL Limited. All rights reserved.  
 No part of this document may be reproduced nor information contained hereon divulged to third parties without written consent from ETEL Limited.

**ETEL**  
Distribution Transformers

SHEET	DWG NO.	REV.
1 OF 1	904.0200.3407	A