

1 2 3 4 5 6 7 8 9 10

A

B

C

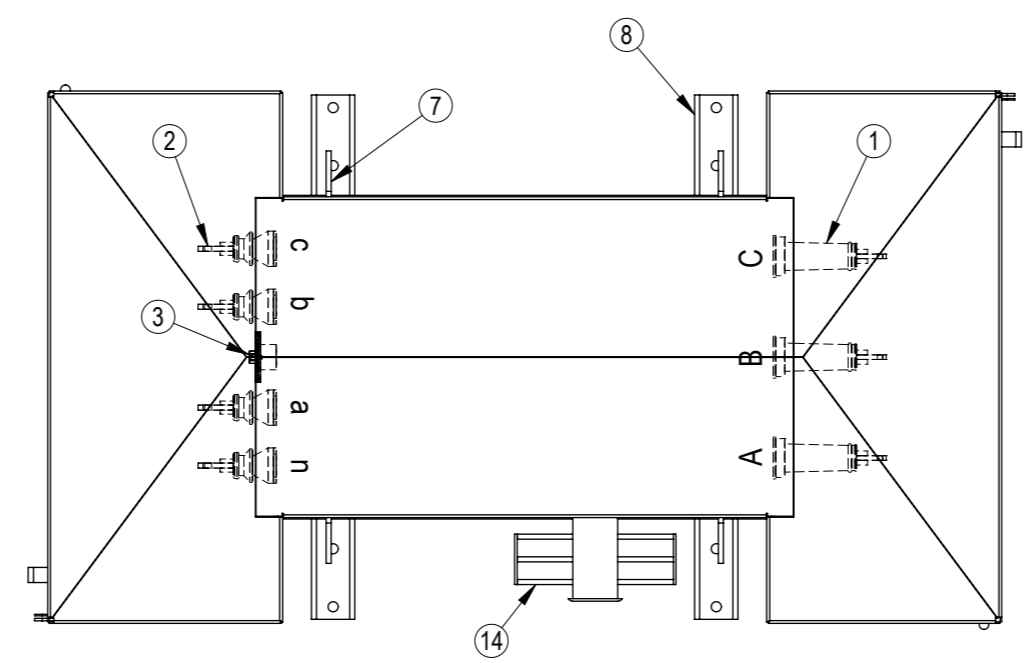
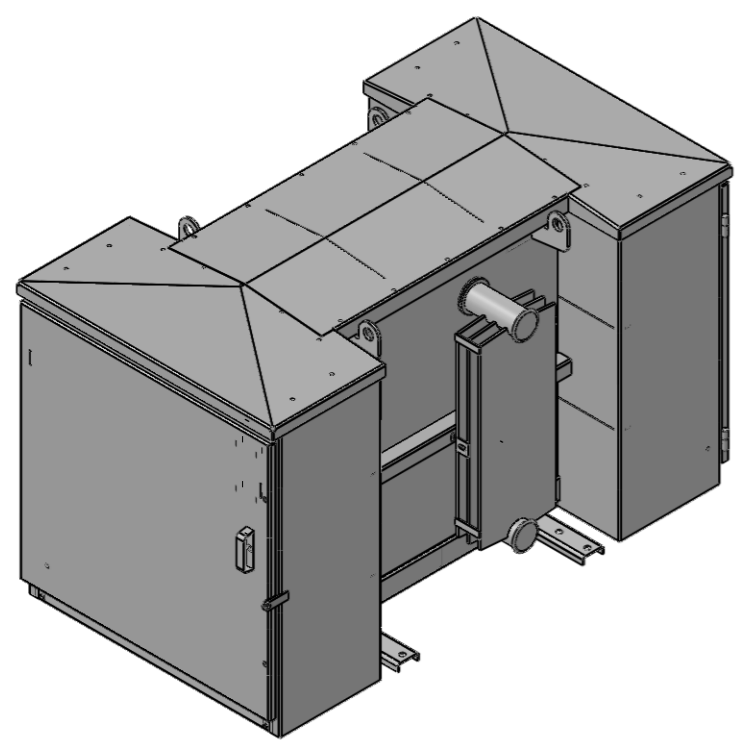
D

E

F

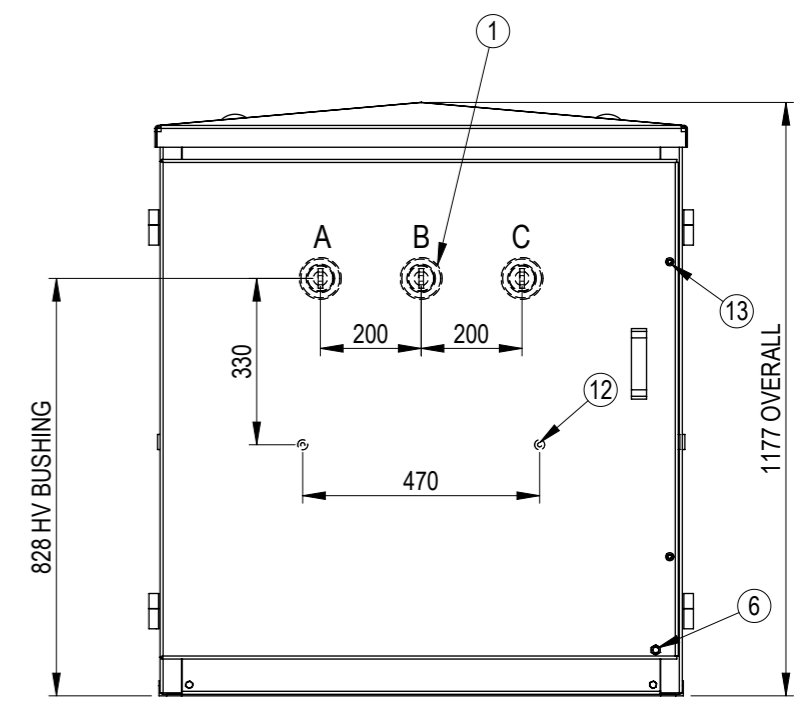
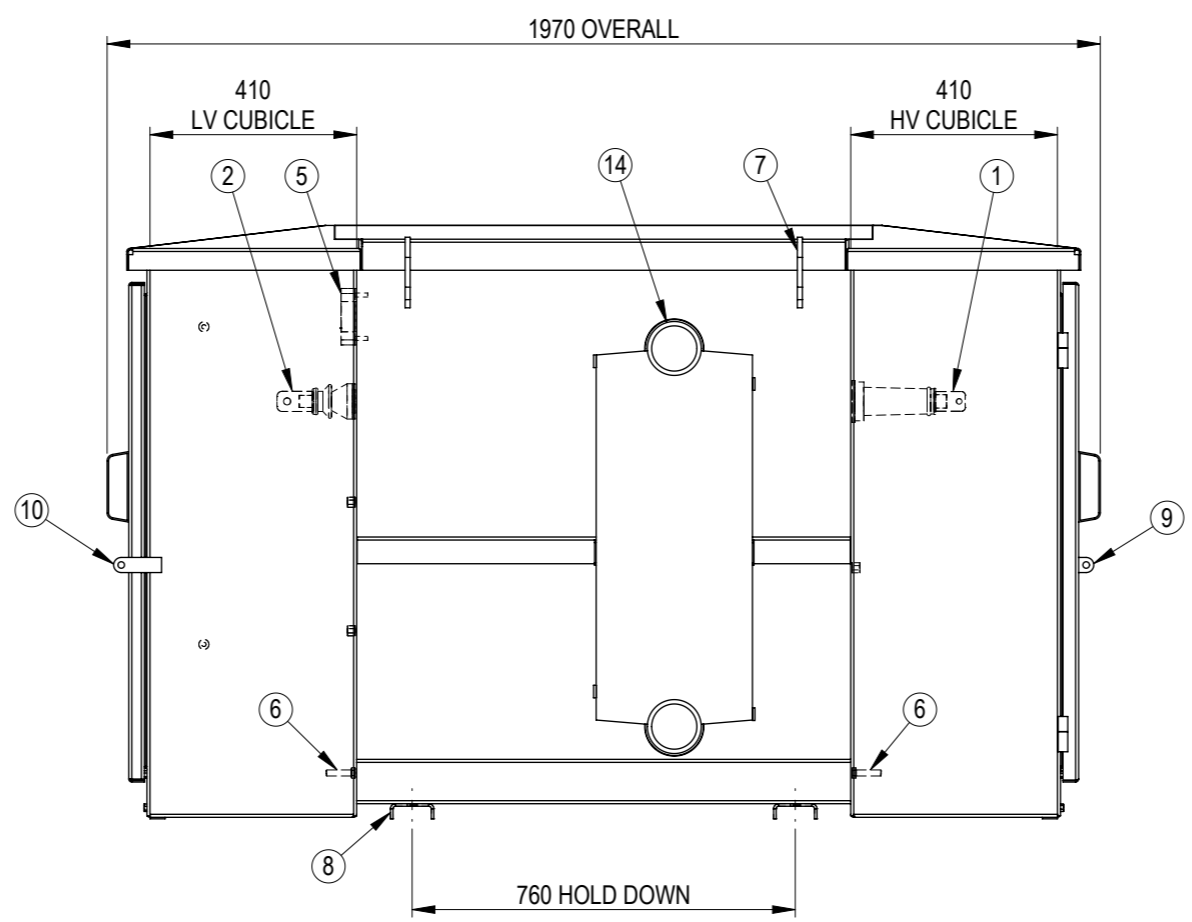
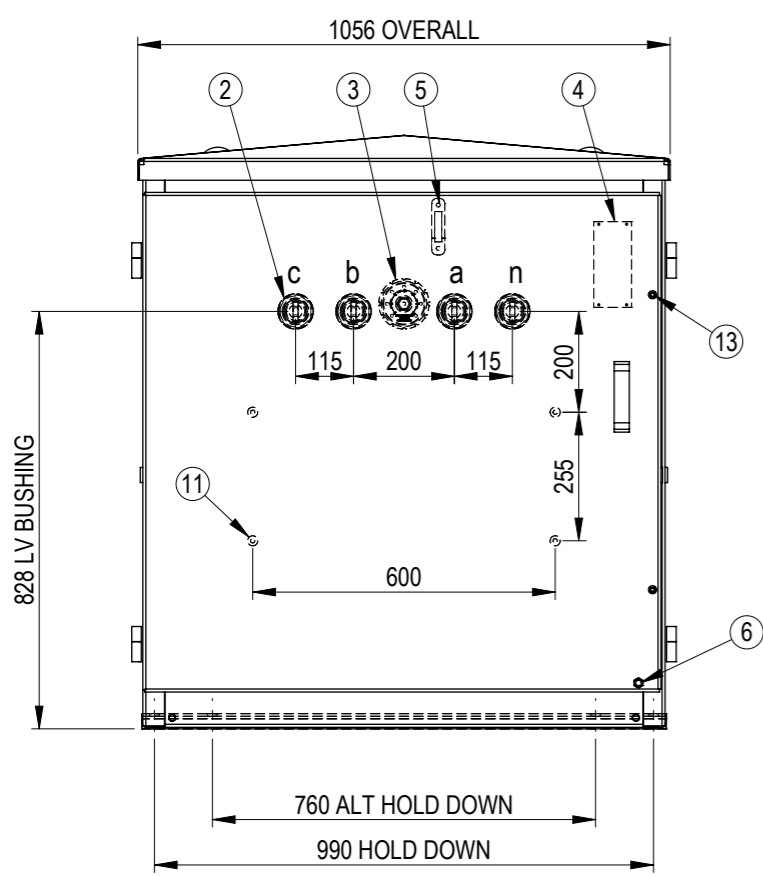
G

H



ITEM	DESCRIPTION
1	HV BUSHING CB, 2 PCE, 11kV, M10 Cu, 160A
2	LV BUSHING No 72, 2PCE, 3.6kV, M16 Cu, 500A
3	TAPSWITCH HANDLE
4	RATING PLATE
5	OIL LEVEL INDICATOR SIGHT GLASS
6	EARTH STUD M12 SS
7	LIFTING LUG
8	HOLD DOWN CHANNEL
9	HV ACCESS DOOR HINGED & PADLOCKABLE
10	LV ACCESS DOOR HINGED & PADLOCKABLE
11	LV SWITCHBOARD BRACKETS M10 x 15 SS NUTS
12	HV SWITCHBOARD BRACKETS
13	DOOR, ALLEN HEAD BOLTS & RUBBER PLUGS
14	COOLING RADIATOR

APPROXIMATE MASS	kg
OIL (328 LITRES)	290
UNTANKING MASS	475
TOTAL	1140



REV	DESCRIPTION	AUTHORITY	DRAWN	DATE	APPD	DATE
A	INITIAL RELEASE	INITIAL RELEASE	SL	1/04/2019	JS	3/04/2019

NAME	SIGNATURE	DATE	SCALE AT A3 = 1:15	TITLE:
DRAWN	SL	1/04/2019		<b>GENERAL ARRANGEMENT</b> <b>150kVA 3Ph PADMOUNT</b> <b>11kV / 415-240V Dyn11</b>
CHECKED	OP	3/04/2019		
APPROVED	JS	3/04/2019		
WEIGHT:		FINISH:		UNLESS SPECIFIED: DIMENSIONS ARE IN mm
-		-		TOLERANCES: LINEAR: X = ± 1 ANGULAR: X = ± 0.5°
MATERIAL:				.X = ± 0.5 .XX = ± 0.1
-				

Copyright © ETEL Limited. All rights reserved.  
 No part of this document may be reproduced nor information contained hereon divulged to third parties without written consent from ETEL Limited.

**ETEL**  
Distribution Transformers

SHEET	DWG NO.	REV.
1 OF 1	904.0150.3407	A