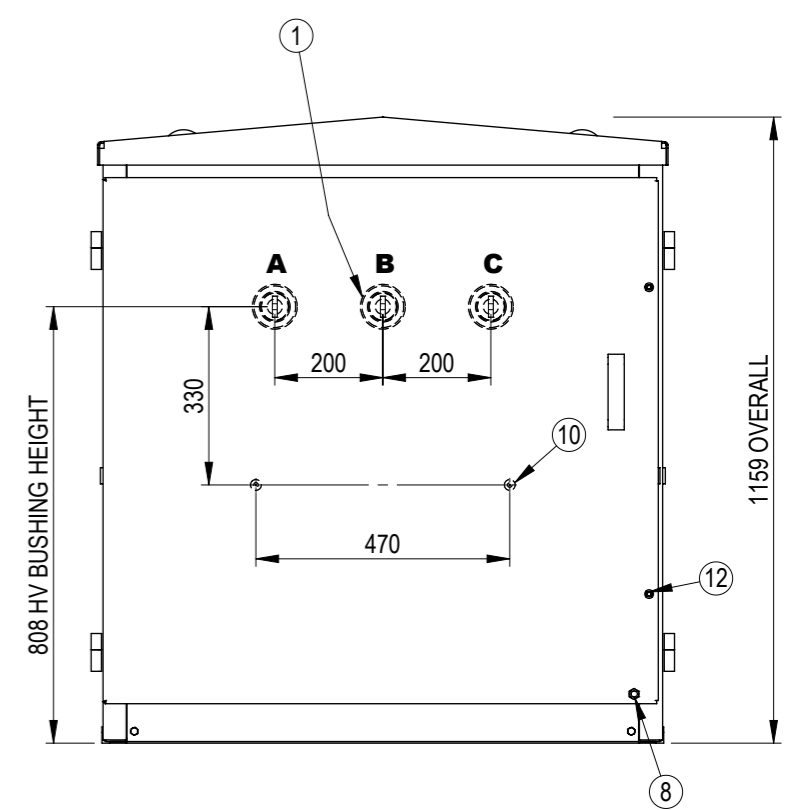
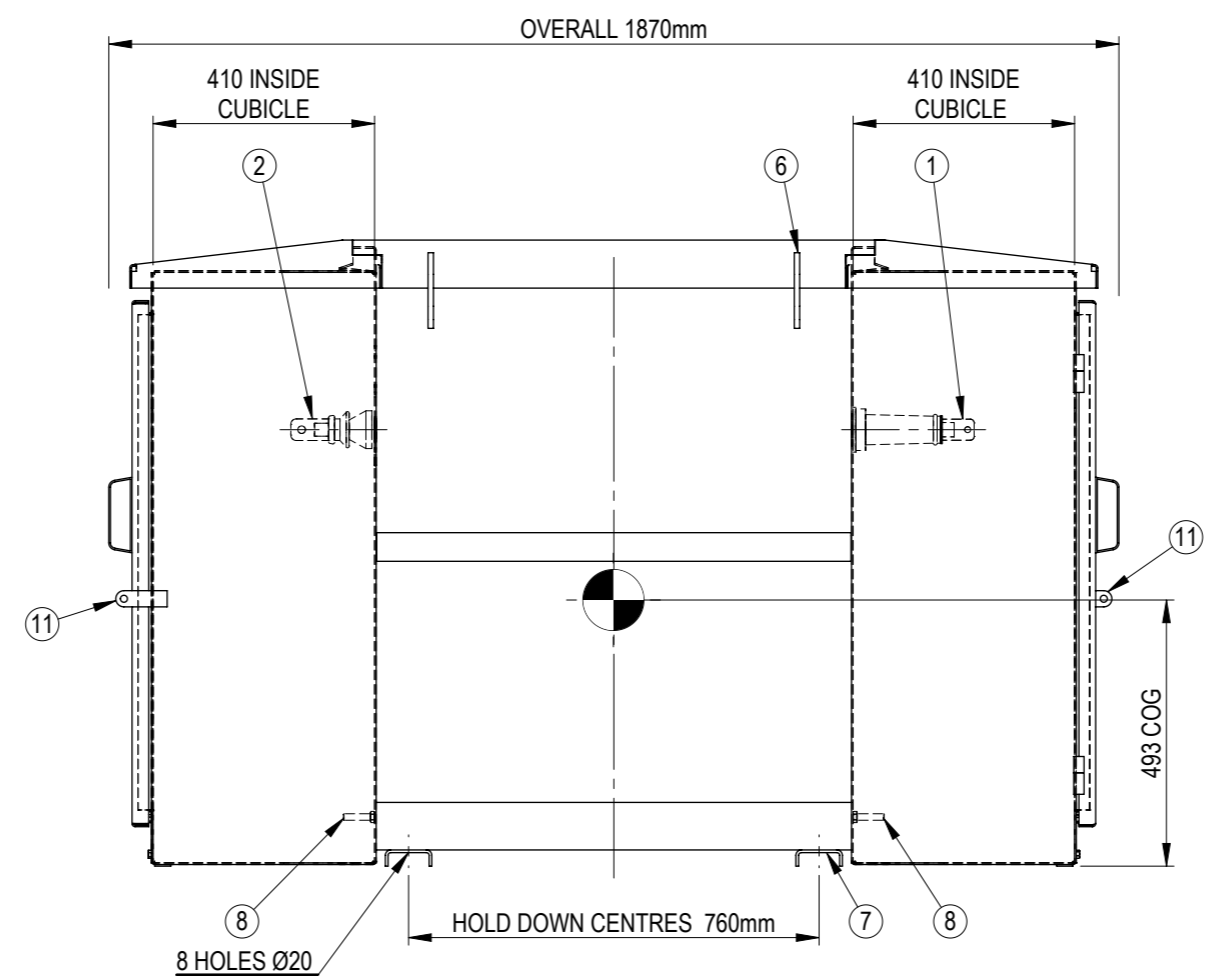
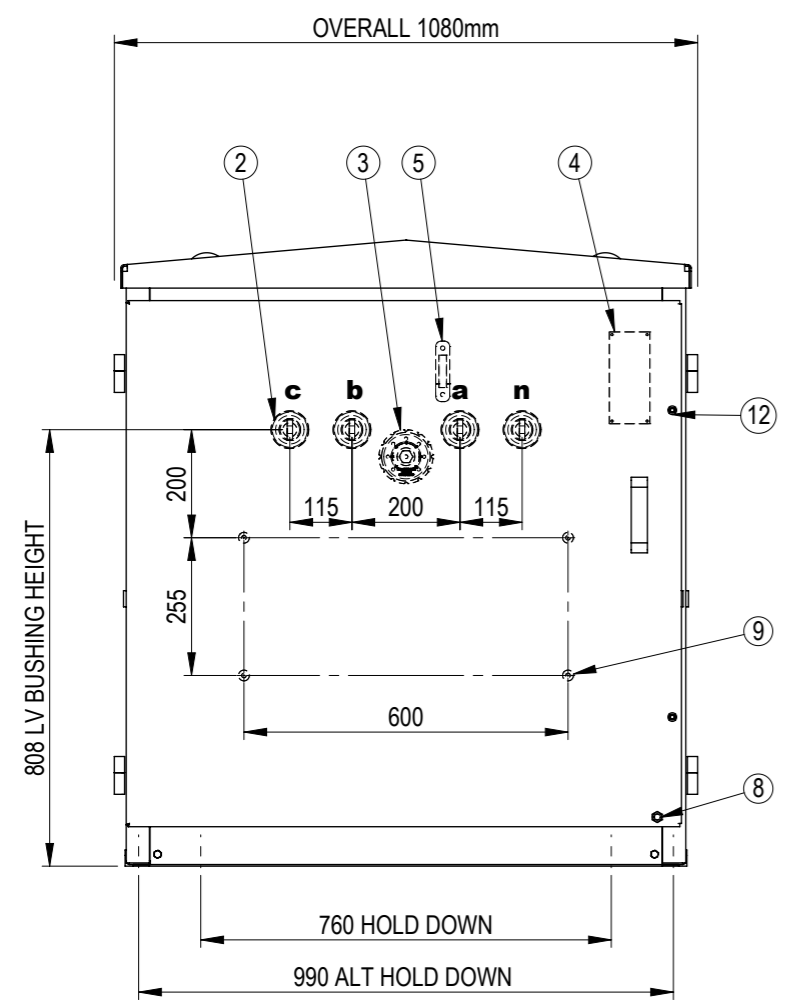
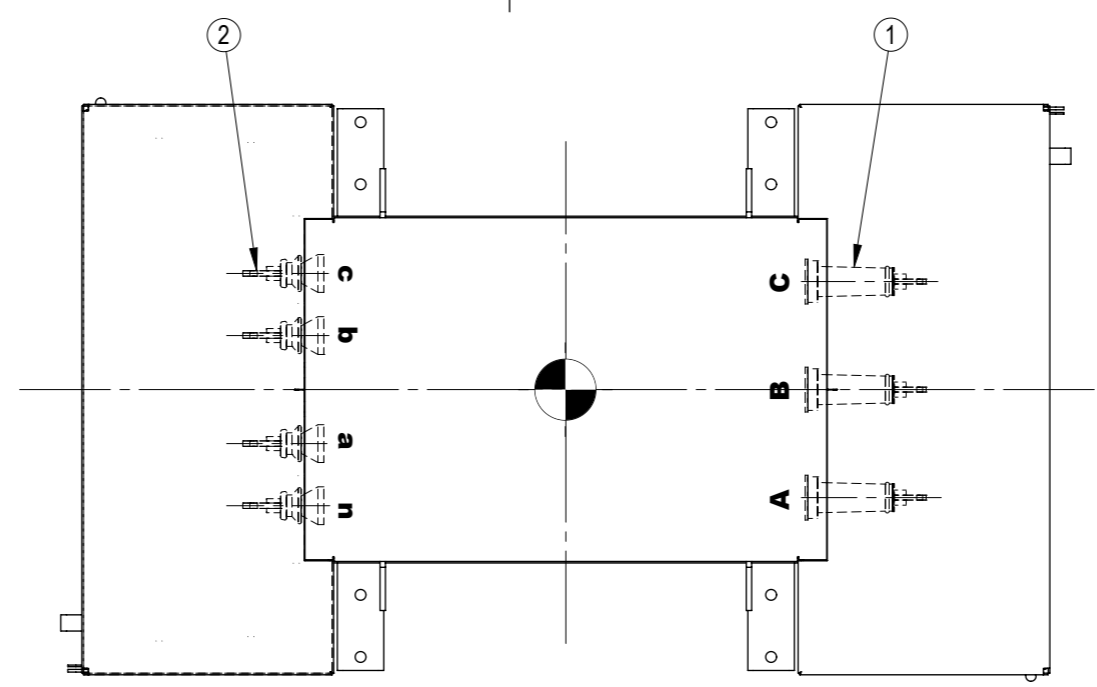


ITEM	DESCRIPTION
1	HV BUSHING 2 PIECE 11kV CABLEBOX 160A
2	LV BUSHING ESAA No.72 3.3kV 200A
3	TAPSWITCH HANDLE
4	RATING PLATE (INSIDE LV DOOR)
5	OIL LEVEL GAUGE
6	LIFTING LUG
7	HOLD DOWN CHANNEL
8	EARTH STUD - M12 S/STEEL
9	LV SWITCHBOARD BRACKETS - M10x15mm S/STEEL NUTS
10	HV SWITCHBOARD BRACKETS - M10x15mm S/STEEL NUTS
11	PADLOCKABLE HINGED DOOR
12	DOOR, ALLEN HEAD BOLTS & RUBBER PLUGS

APPROXIMATE MASSES	kg
UNTANKING MASS	355
OIL (315 Litres)	277
TOTAL MASS	970



NAME	SIGNATURE	DATE	SCALE AT A3 = 1:14	TITLE:
DRAWN MS		16/01/2015		GENERAL ARRANGEMENT 100KVA 3PH PADMOUNT TRANSFORMER 11kV / 415 - 240V Dyn11
CHECKED NU		16/01/2015		
APPROVED NU		16/01/2015		
WEIGHT: -		FINISH: -	UNLESS SPECIFIED: DIMENSIONS ARE IN mm	
MATERIAL: -		TOLERANCES: LINEAR: X = ± 1, .X = ± 0.5, .XX = ± 0.1		ANGULAR: X = ± 0.5°

REV	DESCRIPTION	DESIGN IMPROVEMENT	SL	DATE	APPD	DATE
B	T/SWITCH CHANGED TO WALL MOUNT TYPE	DESIGN IMPROVEMENT	SL	27/03/2018	JS	29/03/2018

REVISION INFORMATION

Copyright © ETEL Limited. All rights reserved. No part of this document may be reproduced nor information contained hereon divulged to third parties without written consent from ETEL Limited.

ETEL
Distribution Transformers

SHEET	DWG NO.	REV.
1 OF 1	904.0100.3401	B