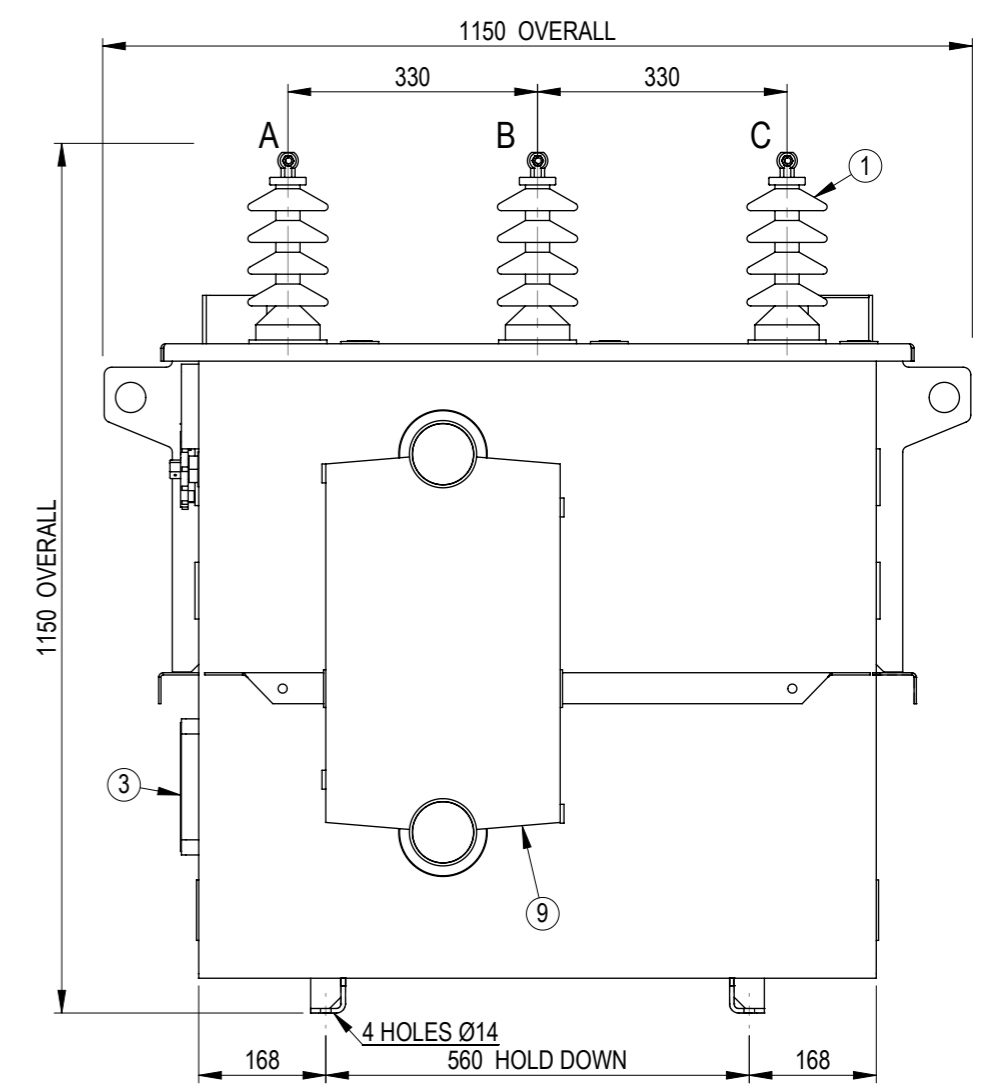
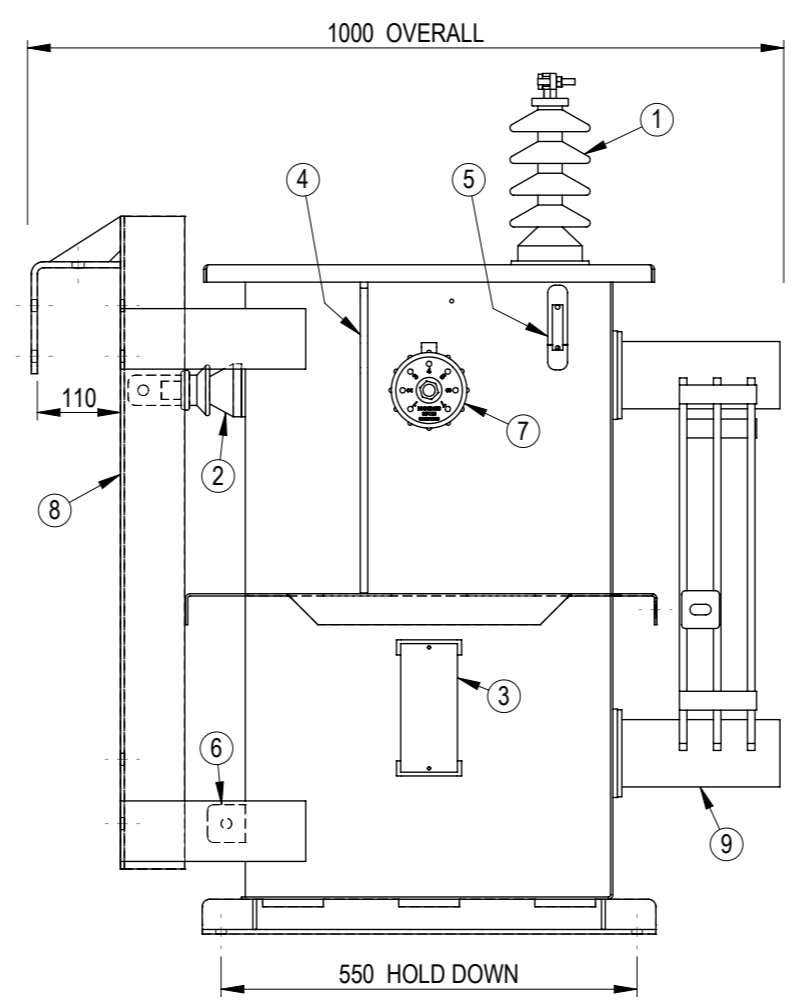
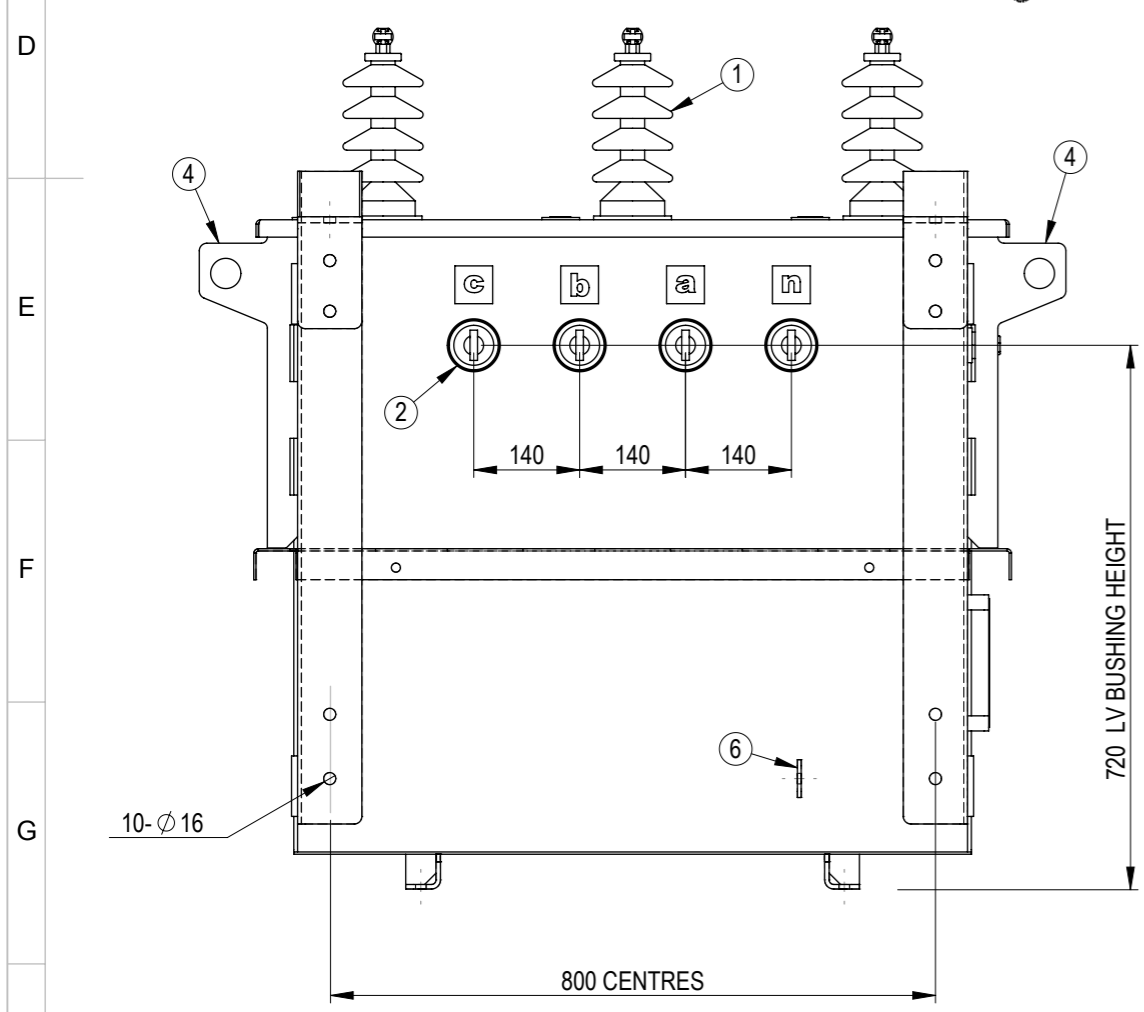


| APPROXIMATE MASSES | kg |
|--------------------|-----|
| OIL 240 litre | 210 |
| UNTANKING MASS | 370 |
| TOTAL | 750 |

| ITEM | DESCRIPTION |
|------|---|
| 1 | HV BUSHING 12kV, No75 30A -4 SHED EYEBOLT |
| 2 | LV BUSHING -3.6kV No72 200A |
| 3 | RATING PLATE |
| 4 | LIFTING LUG |
| 5 | OIL LEVEL SIGHT GLASS |
| 6 | EARTH TERMINAL -STAINLESS STEEL |
| 7 | TAPSWITCH </td |
| 8 | CROSSARM HANGER ASSY |
| 9 | RADIATOR |



| REV | DESCRIPTION | AUTHORITY | DRAWN | DATE | APPD | DATE |
|-----|-----------------|-----------------|-------|----------|------|----------|
| A | INITIAL RELEASE | INITIAL RELEASE | AR | 16/03/16 | VZ | 16/03/16 |

REVISION INFORMATION

| NAME | SIGNATURE | DATE | SCALE AT A3 = 1:10 |
|----------|-----------|------------|--------------------|
| DRAWN | AR | 16/03/2016 | |
| CHECKED | VZ | 16/03/2016 | |
| APPROVED | VZ | 16/03/2016 | |

WEIGHT: -kg
 FINISH: -
 UNLESS SPECIFIED: DIMENSIONS ARE IN mm
 TOLERANCES: LINEAR: X = ± 1, .X = ± 0.5, .XX = ± 0.1; ANGULAR: X = ± 0.5°

TITLE: GENERAL ARRANGEMENT
 100kVA TRANSFORMER POLE CROSSARM
 3PH 11000/415-240V Dyn11

Copyright © ETEL Limited. All rights reserved.
 No part of this document may be reproduced nor information contained hereon divulged to third parties without written consent from ETEL Limited.

SHEET 1 OF 1
 DWG NO. 904.0100.3006
 REV. A