

Minipad

PAD MOUNTED TRANSFORMERS

Product Data Sheet

Revision: 4

ETEL

ISO 9001 Registered

ETEL'S Minipad range of padmounted distribution substation transformers has been developed specifically to meet New Zealand conditions.

The Minipad features compact overall dimensions and identical HV and LV cubicles, resulting in a symmetrical and low key appearance.

Exposed radiators employed in the standard construction provide efficient cooling performance. Alternative concealed radiators can be supplied if required.

The cubicle design allows for full flexibility in accommodating fuse gear and switchgear selection.

ETEL can also deliver a complete, ready-to-install solution to your substation requirements. Including a Minipad unit fully equipped with HV and LV switchgear to your specifications.

Factory installation of switchgear, fuse gear and accessories for street lighting controls etc. provides a cost effective and efficient alternative to after delivery workshop assembly.



Features

- Compact Footprint and overall size
- Integrated Switchgear (HV and LV) options are available
- Hermetically sealed for long life
- 100 to 1500kVA
- Zinc Spray Paint system available
- Standard Transformer oil or biodegradable fluid options available
- Lifting lugs.

Technical Specifications

Core Type	Distributed Gap Wound Core, Core Type Transformers
Electrical Steel Type	Cold Rolled, Grain Oriented, Silicon steel Sheets
Tank Sealing	Hermetically sealed
Oil Type	Oil filled to BS148 and AS1767
KVA sizes available	100, 150, 200, 300, 500, 750, 1000, 1250, 1500 3 Phase
HV Volts	6600, 11000, 22000, 33000
LV Volts	415 - 240 as standard (others available)
Connection	Dyn11 as standard (others available)
HV Tappings	+5% to -7.5% up to 300kVA +2.5% to -10% 500kVA & above Tapping in steps of 2.5%
Oil/Winding Rises	60 / 65°C
BIL / Power Frequency Levels	95kVpeak / 28kVrms 150kVpeak / 50kVrms
Maximum Operating Pressure	35kPA

Minipad

PAD MOUNTED TRANSFORMERS

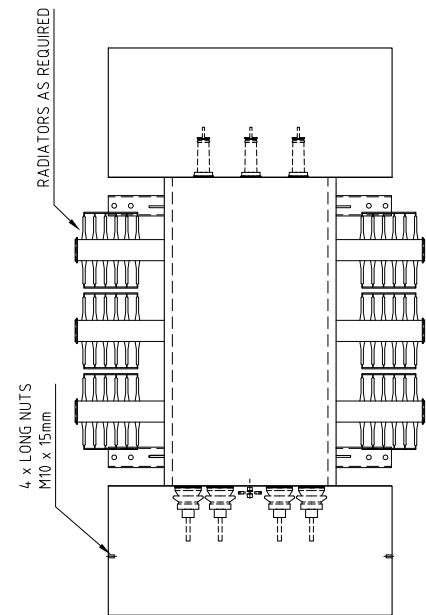
Product Data Sheet

Revision: 4



ISO 9001 Registered

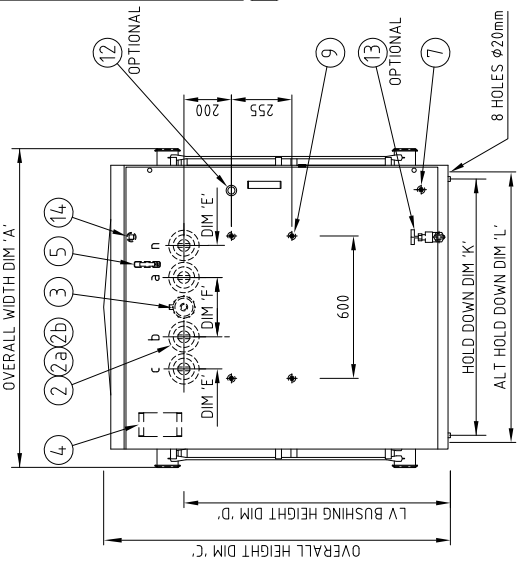
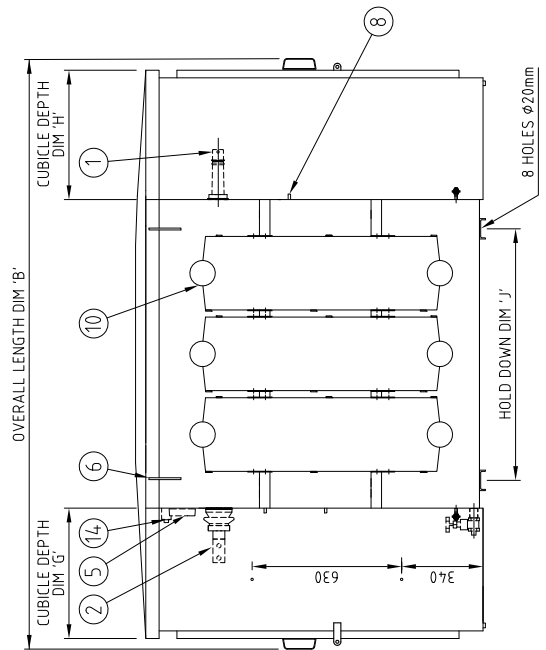
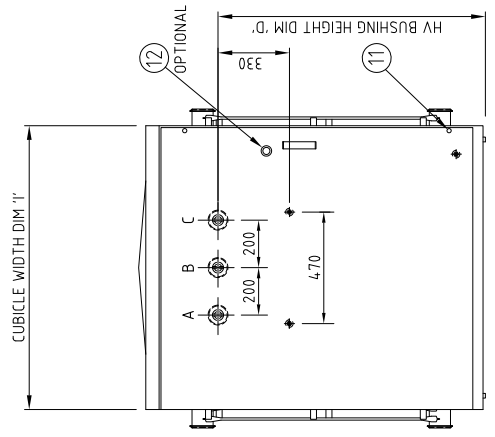
ITEM	DESCRIPTION
1	HV BUSHING 11kV 160A (SUITS RAYCHEM) 1 x HOLE ϕ 14
2	LV BUSHING ESAA No.72, 1 x HOLE ϕ 14
2a	LV BUSHING ESAA No.73, 1 x HOLE ϕ 14, (500kVA)
2b	LV BUSHING ESAA No.73, 2 x HOLE ϕ 14, (750/1000kVA)
2c	LV BUSHING ESAA No.73, 4 x HOLE ϕ 14, (1250/1500kVA)
3	TAPSWITCH HANDLE & LOCKING BRACKET
4	RATING PLATE (POSITIONED ON LV DOOR)
5	OIL GAUGE
6	LIFTING LUG
7	EARTH STUD M12 STAINLESS STEEL
8	HV SWITCHBOARD BKT. M10 x 20 NUTS
9	LV SWITCHBOARD BKT. M10 x 20 NUTS
10	COOLING FINS (WHERE APPLICABLE)
11	HV DOOR ALLEN KEY BOLT & RUBBER PLUG
12	LOCKWOOD NIGHTLATCH (OPTIONAL EXTRA)
13	DRAIN VALVE (OPTIONAL EXTRA)
14	FILLER & FILTER PLUG-STD. 500kVA & ABOVE



APPROXIMATE VALUES:

kVA	DIM A	DIM B	DIM C	DIM D	DIM E	DIM F	DIM G
50	1060	1820	1160	808	115	200	410
75	1060	1760	1160	808	115	200	410
100	1060	1840	1160	808	115	200	410
150	1060	1930	1160	808	115	200	410
200	1060	1930	1160	808	115	200	410
300	1060	2080	1160	923	115	200	410
500	1380	2490	1440	1130	135	250	520
1000	1380	2490	1440	1130	135	250	520
1250	1500	2600	1580	1270	170	290	520
1500	1550	2740	1750	1340	170	290	520

kVA	DIM H	DIM I	DIM J	DIM K	DIM L	Oil (ltrs)	MASS (kg)
50	410	1030	620	760	990	205	740
75	410	1030	620	760	990	230	800
100	410	1030	760	760	990	310	990
150	410	1030	760	760	990	330	1110
200	410	1030	760	760	990	350	1220
300	410	1030	760	760	990	390	1540
500	410	1190	760	760	1140	465	2050
750	520	1190	1060	1000	1140	730	2930
1000	520	1190	1060	1000	1140	610	3240
1250	520	1190	1060	1000	1140	970	3800
1500	520	1190	1300	1000	1140	1215	4650



REV	DESCRIPTION	DRAWN	DATE	APPD.	DRAWN	DATE
.	.	VIRGILIO S	29/4/11	.	.	.
.	.	CHECKED	BHH	.	.	.
.	.	DATE	03/05/11	.	.	.
.	.	SCALE
.	.	TOLERANCE

DRAWING No.	REV
039.904.0629	A

GENERAL ARRANGEMENT - MINIPAD PADMOUNT TRANSFORMERS 50 TO 1500kVA 11000 / 415-240V
ETL Distribution Transformers