

# Industrial

## CABLE BOX DISTRIBUTION TRANSFORMER

Product Data Sheet

Revision: 4

**ETEL**

ISO 9001 Registered

ETEL's Industrial Distribution Transformers are designed for simplicity of installation and maintenance. All transformers are designed with Hermetically sealed tanks for long life and minimum oil maintenance.

The range extends from 100kVA or smaller through to 2600kVA, (3 phase) arrangements for indoor and outdoor applications, in New Zealand, Australia and the Pacific Islands.

ETEL's full range includes a model to meet your Distribution Transformer needs. Discuss your particular requirements with our Engineering team.



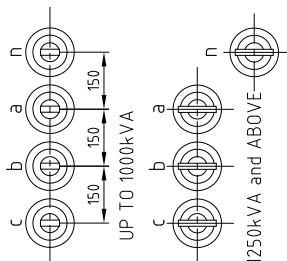
## Features

- Simple tank and terminal configurations for optimum cost efficiency
- Accessories for Transformer protection and Monitoring
- Cable Boxes, Kiosks or open bushing arrangements
- Hermetically sealed for long life
- 100 to 2600kVA
- Zinc Spray Paint system available
- Standard Transformer oil or biodegradable fluid options available
- Lifting lugs.

## Technical Specifications

<b>Core Type</b>	Distributed gap wound core, core type transformers
<b>Electrical Steel Type</b>	Cold rolled, grain oriented, silicon steel sheets
<b>Tank Sealing</b>	Hermetically sealed (non sealed types available)
<b>Oil Type</b>	Oil filled to BS148 and AS1767
<b>HV Volts</b>	6600, 11000, 22000, 33000 As standard (others available)
<b>LV Volts</b>	415 - 240 Dyn11 433 - 250 Dyn11 As standard (others available)
<b>HV Tappings</b>	+5% to -7.5% up to 300kVA + 2.5 to -10% in 2.5% steps 500kVA and above
<b>Oil / Winding Rises</b>	60 / 65°C as standard (others available)
<b>BIL / Power Frequency Levels</b>	95kVpeak / 28kVrms 150kVpeak / 50kVrms 200kVpeak / 70kVrms
<b>Maximum Operating Pressure</b>	35kPA

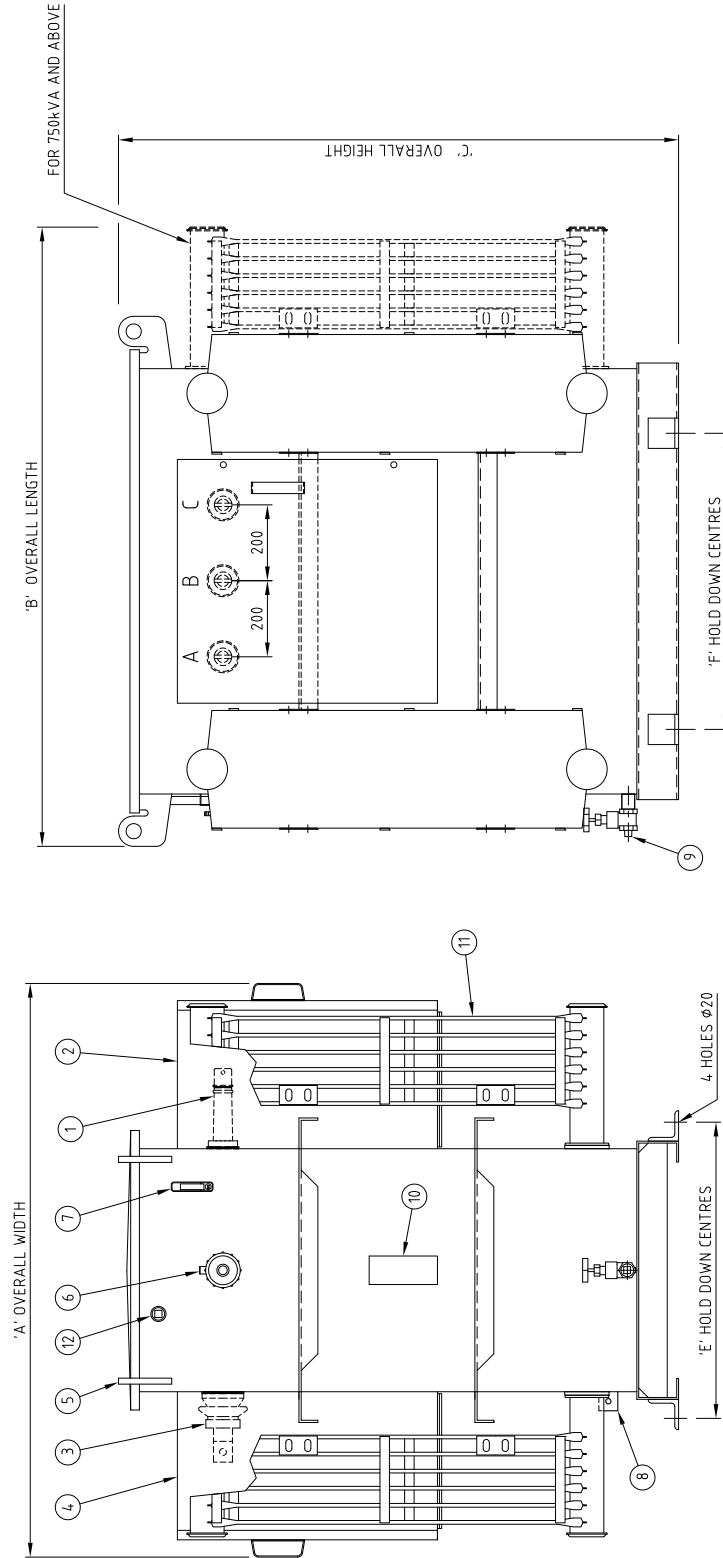
LV BUSHING ARRANGEMENT



APPROXIMATE VALUES:

kVA	DIM A (mm)	DIM B (mm)	DIM C (mm)	DIM E (mm)	DIM F (mm)	OIL Litres	UNTANKING MASS (kg)	TOTAL MASS (kg)
100	1320	1260	1100	630	630	300	370	900
200	1380	1260	1150	700	700	360	550	1200
300	1500	1400	1200	740	740	400	800	1500
500	1520	1500	1450	780	780	610	1100	2240
750	1520	1850	1650	800	800	810	1400	2800
1000	1520	1850	1650	800	800	760	1680	3020
1250	1640	1950	1700	900	900	1015	2050	3805
1500	1680	2100	1750	940	940	1215	2590	4580

ITEM	DESCRIPTION
1	HV BUSHING, No 1 CABLEBOX 2-PIECE, M10, CU
2	HV CABLEBOX 11kV, PARTIALLY INSULATED TO (BS 6435)
3	LV BUSHING, ESAA No.72 : 100-300kVA, ESAA No.73 : 500-1500kVA
4	LV CABLEBOX TO SUIT No.72 & No.73 BUSHINGS
5	LIFTING LUG
6	TAPSWITCH HANDLE & LOCKING BRACKET
7	OIL LEVEL GAUGE
8	EARTH TERMINAL
9	25NB DRAIN VALVE & PLUG (500kVA & ABOVE)
10	RATING PLATE
11	RADIATORS (AS REQUIRED)
12	25NB OIL FILLER & FILTER SOCKET (500kVA & ABOVE)



REV	DESCRIPTION	DRAWN	DATE	APPD.	DATE	DRAWN	DATE
B	C/BOX HANDLES - DESIGN CHANGE	M.S.	20 MAY 11	B.H.H.	29 MAY 2011	VIRGILIO S.	29 MAY 2011
.	.	.	.	.	CHECKED	B.H.H.	
.	.	.	.	.	DATE	12 MAY 2011	
.	.	.	.	.	SCALE		
.	.	.	.	.	TOLERANCE		

<b>Distribution Transformers</b>	
GENERAL ARRANGEMENT INDUSTRIAL TRANSFORMERS CABLE BOX / CABLE BOX 100 TO 1500 kVA 11000 / 4.15-240V	
DRAWING No.	039.904.0630
REV	B