

# Pole Top

THREE PHASE POLE MOUNTED TRANSFORMERS



Distribution Transformers

# Pole Top

THREE PHASE POLE MOUNTED TRANSFORMERS

## PRODUCT DATA SHEET

Revised	2
Document No.	904 - 0002

ETEL has brought over 25 years of experience in Distribution Transformers together with state of the art manufacturing techniques to produce high quality, low loss three phase Polemounted Transformers.

The Small Capacity Pole Top Selection includes platform and pole bolted arrangements from 15kVA through to 75kVA (100 - 630kVA capacity available in larger housing) as utilised in New Zealand, Australia and the Pacific Islands.

ETEL offers as standard the best long-term finish, utilising fully hot dipped galvanised tanks and lids. Painted and other solutions are available.



## FEATURES

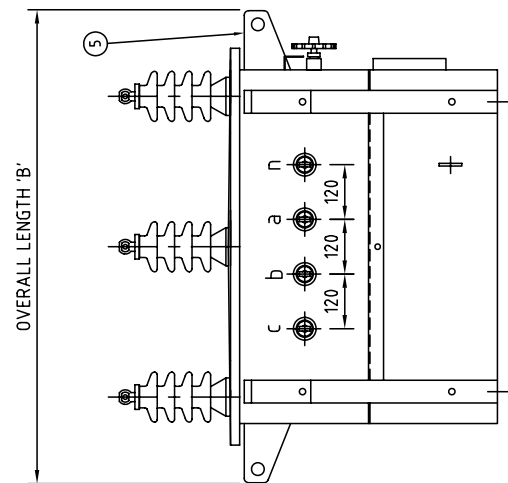
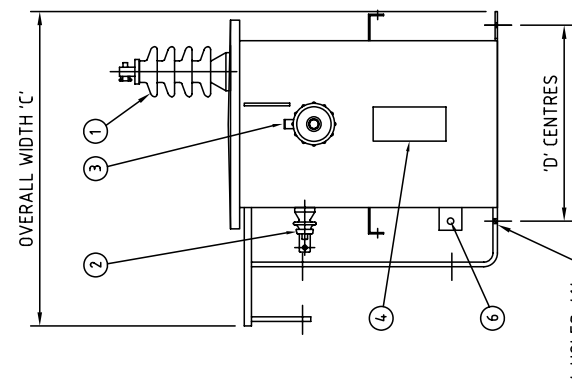
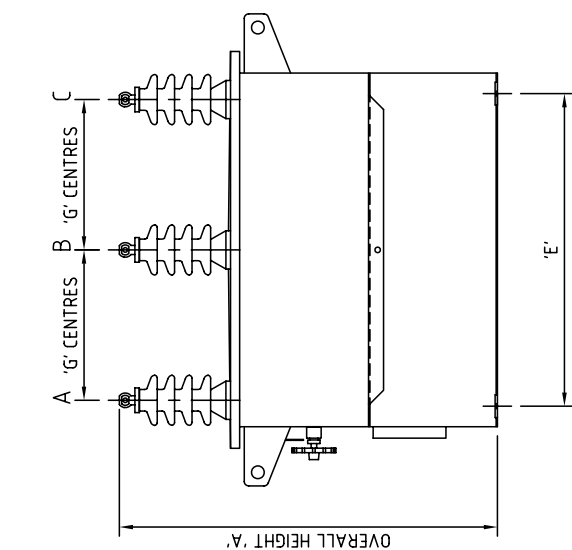
- **Integrated pole brackets and spacer bars**
- **Lid mounted HV bushings**
- **Long life hot dipped galvanized finish**
- **15 to 75kVA**
- **HV and LV Eyebolt Terminations standard, other options available**

## TECHNICAL SPECIFICATIONS

<b>Core Type</b>	: Distributed gap wound core, shell type transformers
<b>Electrical Steel Type</b>	: Cold rolled, grain oriented, silicon steel sheets.
<b>Tank Sealing</b>	: Hermetically sealed.
<b>Oil Type</b>	: Oil filled to BS148 and AS1767
<b>HV Volts</b>	: 11000, 22000, 33000
<b>LV Volts</b>	: 415 - 240V Dyn11 433 - 250V Dyn11 standard, others available.
<b>HV Tappings</b>	: +5% to -7.5% in 2.5% steps. As standard.
<b>Oil / Winding Rises</b>	: 60 / 65°C
<b>BIL / Power Frequency Levels</b>	: 95kVpeak / 28kVrms 150kVpeak / 50kVrms 200kVpeak / 70kVrms
<b>Maximum Operating Pressure</b>	: 35kPA

ITEM	DESCRIPTION
1	HV BUSHING 11kV TWO PIECE TAPERED 4. SHED, EYEBOLT
2	LV BUSHING 4/15V ESAA No71
3	TAPSWITCH HANDLE & LOCKING BRACKET
4	RATING PLATE
5	LIFTING LUG
6	EARTH LUG WITH M2 S/S SET SCREW

kVA	A HEIGHT	B LENGTH	C WIDTH	D CENTRES	E CENTRES	G CENTRES	OIL Litres	UNTANKING MASS kg	TOTAL kg
15	800mm	875mm	670mm	420mm	600mm	265mm	80	120	250
30	870mm	1055mm	680mm	430mm	686mm	330mm	110	150	325
50	960mm	1055mm	680mm	430mm	686mm	330mm	155	225	450
75	1070mm	1090mm	730mm	490mm	746mm	330mm	170	280	535



REV	DESCRIPTION	DATE	APPD.	DRAWN	S.ROBINSON
H	75kVA DETAILS ADDED	220501	S.R.	04/08/94	S.ROBINSON
I	15kVA DETAILS ADDED & REVISED TABLE DETAILS	290606	S.R.	08/08/94	P.LEECE
J	ø12 HOLE ADDED TO STIFFENER FOR SURGE EARTH	24 JAN 07	S.R.	08/08/94	P.LEECE
K	MODIFY DIM TABLE	23 APR 08	NU	1=10	P.LEECE

GENERAL ARRANGEMENT	3Ø TRANSFORMER - 11000 / 4/15 VOLT	15kVA - 75kVA
DRAWING No.	039.904.0002	REV K