

Pole Top

THREE PHASE LARGE CAPACITY
POLE MOUNTED TRANSFORMERS



Distribution Transformers

Pole Top

THREE PHASE LARGE CAPACITY
POLE MOUNTED TRANSFORMERS

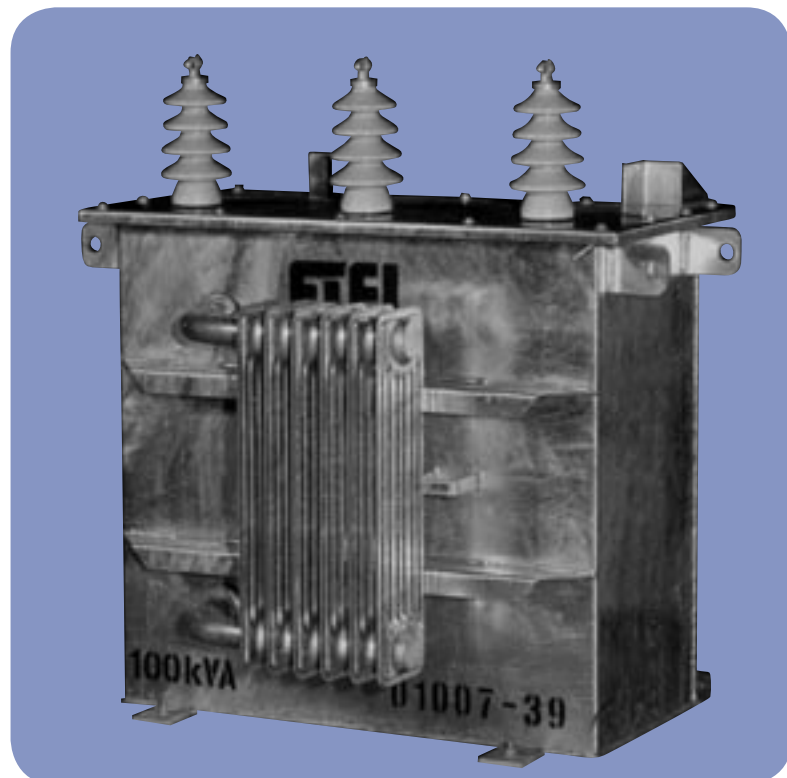
PRODUCT DATA SHEET

Revised	2
Document No.	904 - 0002

ETEL has brought over 25 years of experience in Distribution Transformers together with state of the art manufacturing techniques to produce high quality, low loss three phase Polemounted Transformers.

The Large Capacity Pole Top selection includes platform and pole bolted arrangements from 100kVA through to 630kVA (15 - 75kVA capacity available in smaller housing) as utilised in New Zealand, Australia and the Pacific Islands.

ETEL offers as standard the best long-term finish, utilising fully hot dipped galvanised tanks and lids. Painted and other solutions are available.



FEATURES

- **Integrated pole brackets and spacer bars**
- **Lid mounted HV bushings**
- **Long life hot dipped galvanized finish**
- **100 to 630kVA**
- **HV and LV Eyebolt Terminations standard, other options available**

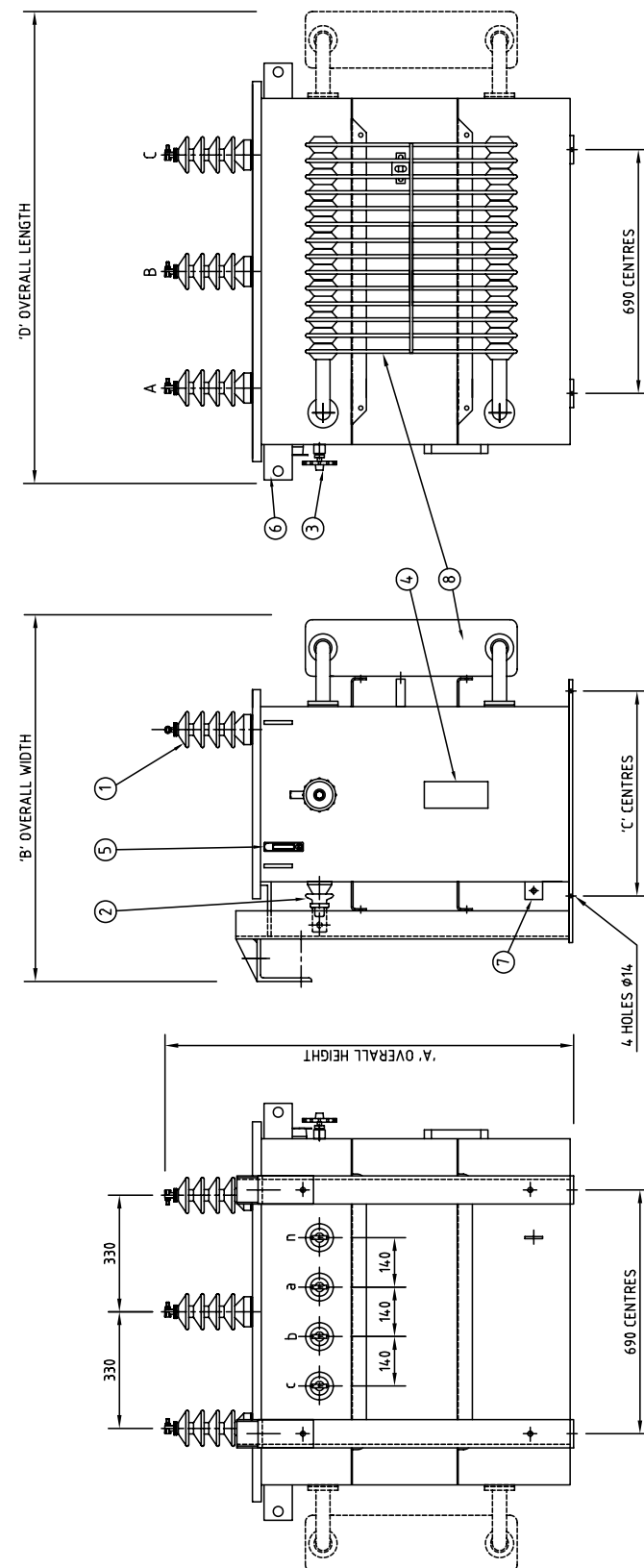
TECHNICAL SPECIFICATIONS

Core Type	: Distributed gap wound core, shell type transformers
Electrical Steel Type	: Cold rolled, grain oriented, silicon steel sheets.
Tank Sealing	: Hermetically sealed.
Oil Type	: Oil filled to BS148 and AS1767
HV Volts	: 11000, 22000, 33000
LV Volts	: 415 - 240V Dyn11 433 - 250V Dyn11 standard, others available.
HV Tappings	: +5% to -7.5% in 2.5% steps. As standard.
Oil / Winding Rises	: 60 / 65°C
BIL / Power Frequency Levels	: 95kVpeak / 28kVrms 150kVpeak / 50kVrms 200kVpeak / 70kVrms
Maximum Operating Pressure	: 35kPA

ITEM	DESCRIPTION
1	HV BUSHING 11kV ESAA No75 TWO PIECES EYEBOLT
2	LV BUSHING 415V ESAA No72 - 500A
3	TAPSWITCH HANDLE & LOCKING BRACKET
4	RATING PLATE
5	OIL GAUGE
6	LIFTING LUG
7	EARTH STUD M12 STAINLESS STEEL
8	COOLING RADIATORS WHERE APPLICABLE

kVA	OIL Litres	OIL MASS kg	UNTANKING MASS kg	TOTAL kg
100	224	197	355	710
150	305	268	450	940
200	305	268	545	1055

kVA	A HEIGHT	B LENGTH	C WIDTH	D CENTRES
100	1140	1000	570	1146
150	1200	1040	610	1246
200	1200	1080	600	1340



REV	DESCRIPTION	DRAWN	DATE	APPD.	DRAWN	DATE	G.KNIGHT
B	Ø12 HOLE ADDED TO STIFFENER FOR SURGE EARTH	A.R.	25 JAN 07			10/05/04	
C	MODIFY DIM AND WEIGHT TABLES	VS	23/4/08		S.ROBINSON	10/05/04	
						1:12.5	
						±0.2mm	

100KVA, 150KVA, 200KVA 3Ø
GENERAL ARRANGEMENT
TYPICAL FOR TENDER PURPOSES ONLY

ETEL Distribution Transformers	REV C DRAWING No. 039.904.0170
--	-----------------------------------