

Minipad

PAD MOUNTED TRANSFORMERS



Minipad

PAD MOUNTED TRANSFORMERS

ETEL's Minipad range of ground mounted Distribution Transformers has been specifically developed to meet New Zealand conditions.

The Minipad features compact overall dimensions and identical HV and LV cubicles, resulting in a symmetrical and low key appearance.

Exposed radiators employed in the standard construction provide efficient cooling performance. Alternative concealed radiators can be supplied if required.

The cubicle design allows for full flexibility in accommodating fuse gear and switch gear selection.

ETEL can also deliver a complete, ready-to-install solution to your substation requirements. Including a Minipad unit fully equipped with HV and LV switchgear to your specifications.

Factory installation of switch gear, fuse gear and accessories for street lighting controls etc provides a cost effective and efficient alternative to after delivery workshop assembly.

ETEL's full catalogue of Distribution Transformers includes a model to meet your Distribution Transformer need. Discuss your particular requirement with our Engineering team.

FEATURES

- Compact Footprint and overall size
- Integrated Switchgear (HV and LV) options are available
- Hermetically sealed for long life
- 100 to 1500kVA

PRODUCT DATA SHEET

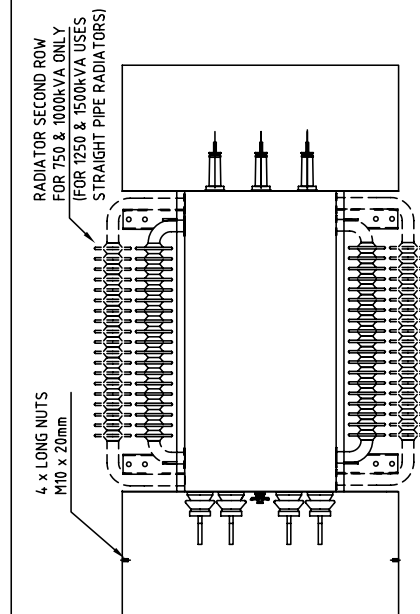
Revised	2
Document No.	904 - 0042



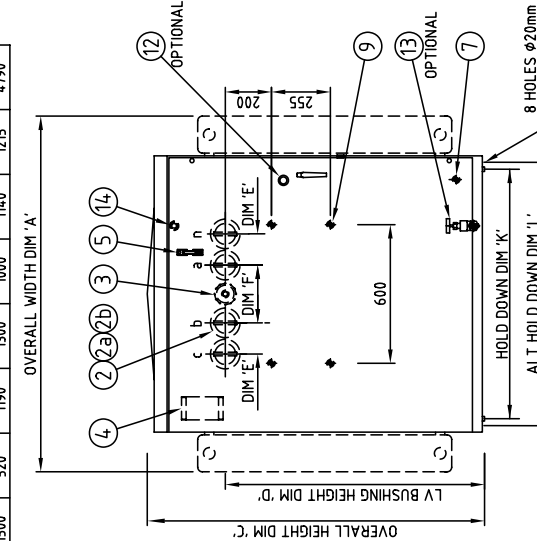
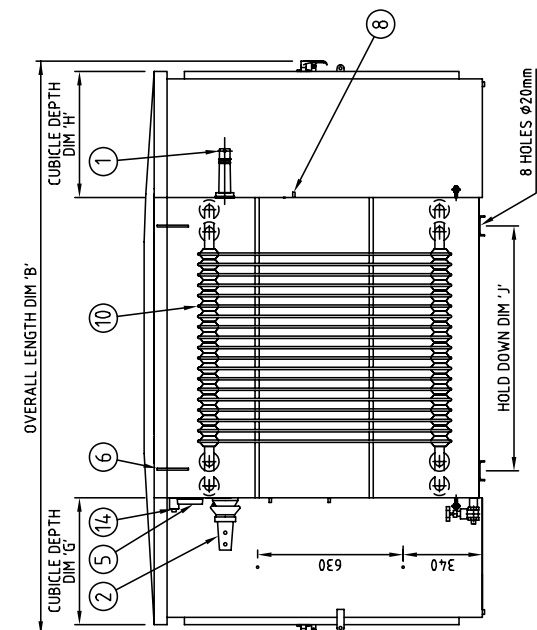
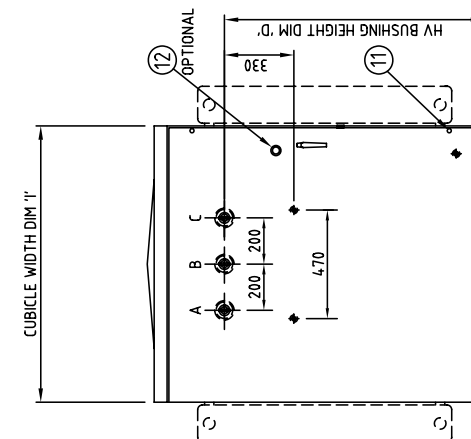
TECHNICAL SPECIFICATIONS

Core Type	: Distributed Gap Wound Core, Core Type Transformers
Electrical Steel Type	: Cold Rolled, Grain Oriented, Silicon steel Sheets.
Tank Sealing	: Hermetically sealed.
Oil Type	: Oil filled to BS148 and AS1767
KVA sizes available	: 100, 150, 200, 300, 500, 750, 1000, 1250, 1500 3 Phase
HV Volts	: 11000, 22000 and 33000
LV Volts	: 415 - 240 as standard (others available)
Connection	: Dyn11 as standard (others available)
HV Tappings	: +5% to -7.5% up to 300kVA +2.5% to -10% 500kVA & above Tapping is steps of 2.5%
Oil / Winding Rises	: 60 / 65°C
BIL / Power Frequency Levels	: 95kVpeak / 28kVrms 150kVpeak / 50kVrms
Maximum Operating Pressure	: 35kPA

ITEM	DESCRIPTION
1	HV BUSHING 11kV 160A (SUITS RAYCHEM) 1 x HOLE Ø14
2	LV BUSHING ESAA No.72, 1 x HOLE Ø14
2a	LV BUSHING ESAA No.73, 1 x HOLE Ø14 (500kVA)
2b	LV BUSHING ESAA No.73, 2 x HOLE Ø14 (750/1000kVA)
2c	LV BUSHING ESAA No.73, 4 x HOLE Ø14 (1250/1500kVA)
3	TAPSWITCH HANDLE & LOCKING BRACKET
4	RATING PLATE (POSITIONED ON LV DOOR)
5	OIL GAUGE
6	LIFTING LUG
7	EARTH STUD M12 STAINLESS STEEL
8	HV SWITCHBOARD BKT. M10 x 20 NUTS
9	LV SWITCHBOARD BKT. M10 x 20 NUTS
10	COOLING FINS (WHERE APPLICABLE)
11	HV DOOR ALLEN KEY BOLT & RUBBER PLUG
12	LOCKWOOD NIGHTLATCH (OPTIONAL EXTRA)
13	DRAIN VALVE (OPTIONAL EXTRA)
14	FILLER & FILTER PLUG-STD. 500kVA & ABOVE



kVA	DIM A	DIM B	DIM C	DIM D	DIM E	DIM F	DIM G
50	1060	1820	1160	808	115	200	410
75	1060	1760	1160	808	115	200	410
100	1060	1830	1160	808	115	200	410
150	1060	1930	1160	808	115	200	410
200	1060	1930	1160	808	115	200	410
300	1130	2080	1160	923	115	200	410
500	1380	2140	1210	923	135	230	410
750	1460	2530	1440	1130	135	250	520
1000	1460	2530	1440	1130	135	250	520
1250	1780	2520	1580	1270	170	270	520
1500	1800	2740	1750	1340	170	200	520
kVA	DIM H	DIM I	DIM J	DIM K	DIM L	OIL (litrs)	MASS (kg)
50	410	1030	620	760	990	205	735
75	410	1030	620	760	990	230	800
100	410	1030	760	760	990	270	930
150	410	1030	760	760	990	305	1090
200	410	1030	760	760	990	350	1220
300	410	1030	760	760	990	390	1530
500	410	1190	760	760	1140	465	2050
750	520	1190	1060	1000	1140	730	2930
1000	520	1190	1060	1000	1140	695	3280
1250	520	1190	760	1060	1140	960	3530
1500	520	1190	1300	1000	1140	1215	4790



REV	DESCRIPTION	DRAWN	DATE	APPD.	DRAWN	DATE
H	ITEM CHANGED	A.A.	12/06/03	S.R.	S.ROBINSON	09/05/98
I	DIMENSIONS MODIFIED. 150kVA ADDED.	N.U.	31/05/04	S.R.	CHECKED	P.LEECE
J	REVISED GA & ADDED 1250 & 1500kVA DETAILS	PAUL R.	13/07/06	S.R.	DATE	09/05/98
K	MODIFY DIM & WEIGHT TABLE	VS	24/4/08	NU	SCALE	NTS
L	500kVA REVISED	A.R.	28 MAY 08	.	TOLERANCE	NA

PROPOSED GENERAL ARRANGEMENT 50kVA TO 1500kVA 3Ø PADMOUNT TRANSFORMER	DRAWING No. 039,904,0042 REV L

