

Switchgear

LOW VOLTAGE

Product Data Sheet

Revision: 1

ETEL

ISO 9001 Registered

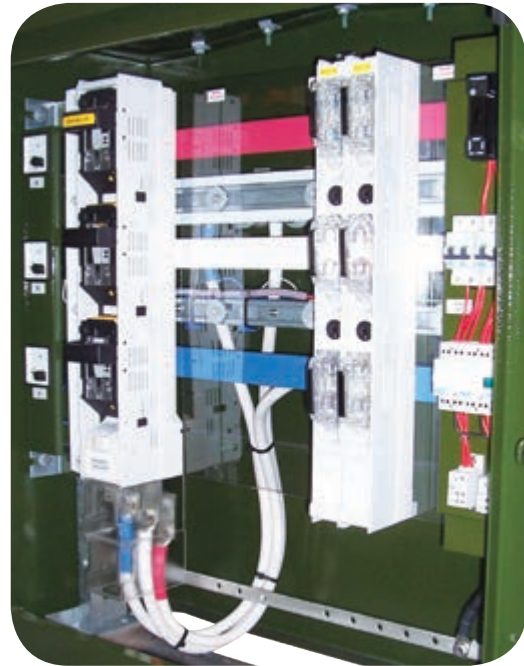
ETEL has developed a modular frame arrangement and LV busbar system to accommodate isolators and vertical/horizontal disconnectors.

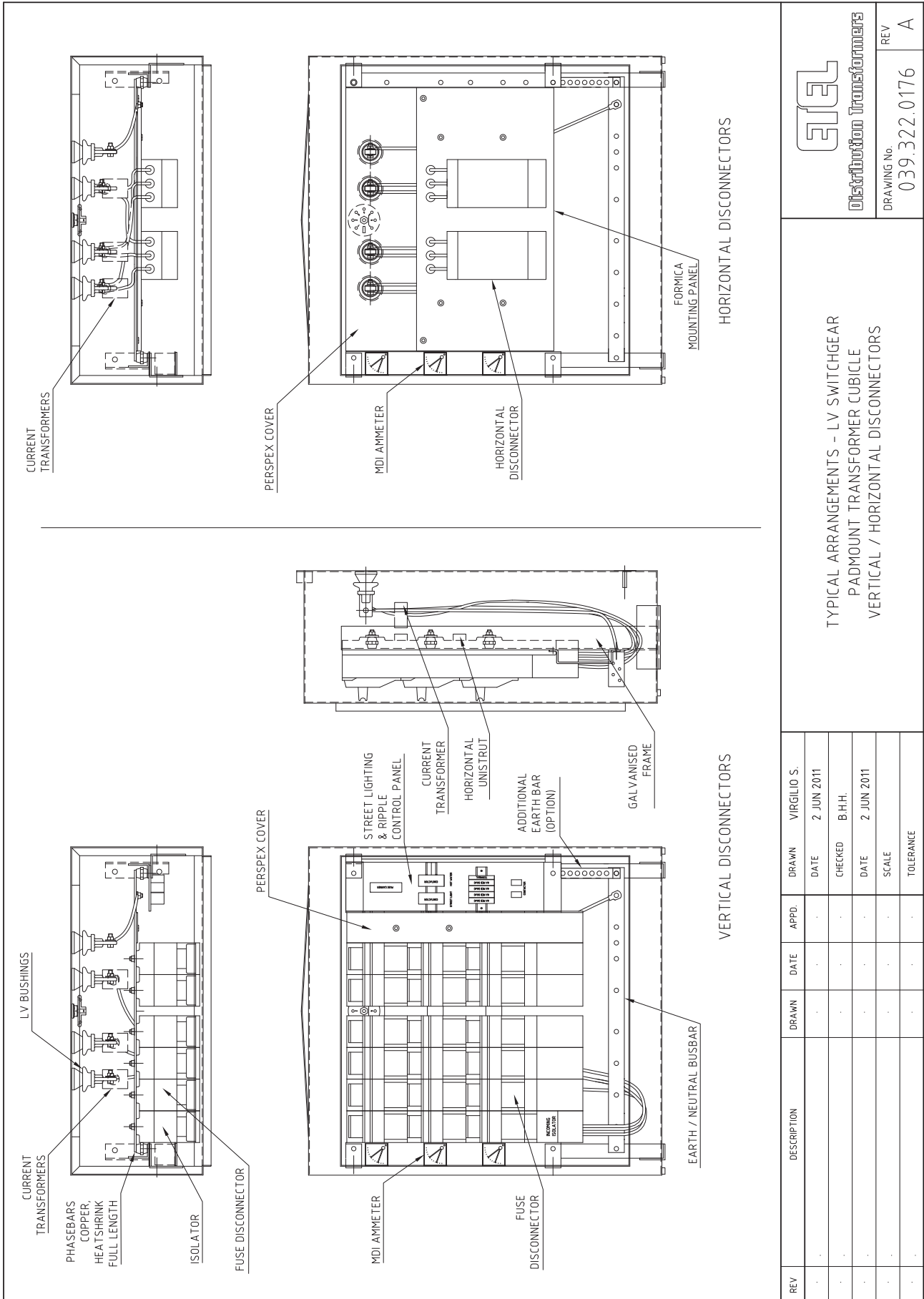
ETEL's fuse frame and switchgear system is designed to fit into an LV cubicle of the kiosk substation prior to dispatch, eliminating any additional workshop fitting or on-site wiring. The customer is required to terminate the outgoing consumer cables only.

The low voltage fuse frame is designed to suit a specific transformer size, ranging from 15kVA up to and including 2.6MVA.

Features

- Insulated busbars for operational safety
- Transformer isolator or direct busbar connection
- Multiflex cables for easy transformer connection
- Modular concept for ease of mounting, assembly and expansion
- 3 phase or 1 phase operation for disconnectors
- Optional integrated street lighting and local control
- Hot dipped galvanized frame for long life
- Optional MDI's and CT's rated to suit transformer size





Distribution Transformers

DRAWING No. 039.322.0176

REV A

TYPICAL ARRANGEMENTS – LV SWITCHGEAR
 PADMOUNT TRANSFORMER CUBICLE
 VERTICAL / HORIZONTAL DISCONNECTORS

REV	DESCRIPTION	DRAWN	DATE	APPD.	DRAWN	DATE	DRAWN	DATE
.					VIRGILIO S.	2 JUN 2011		
.					CHECKED	B.H.H.		
.					DATE	2 JUN 2011		
.					SCALE			
.					TOLERANCE			