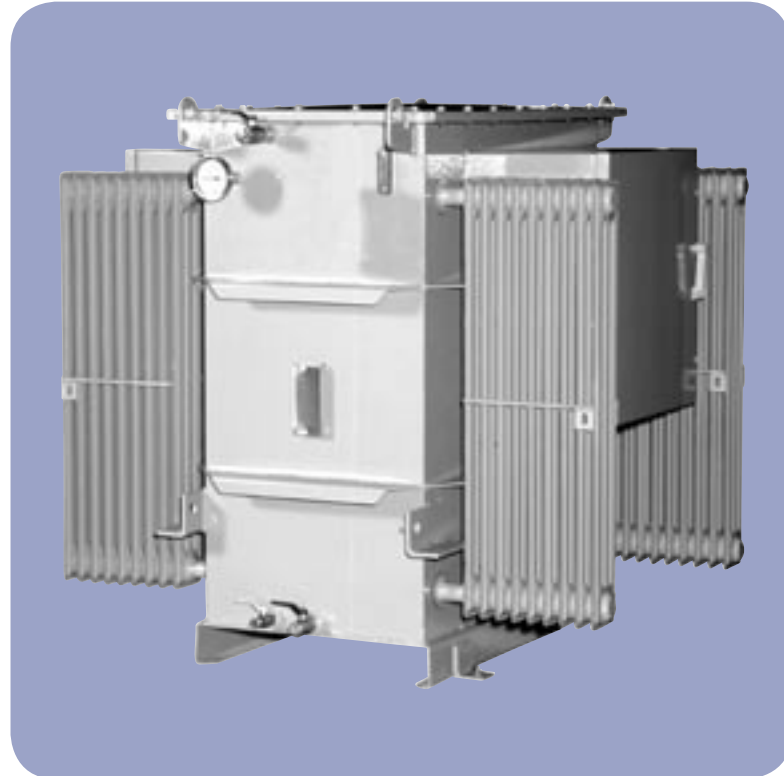


| | | |
|---------------------------|--------------|------------|
| PRODUCT DATA SHEET | Revised | 2 |
| | Document No. | 904 - 0104 |

ETEL's Industrial Distribution Transformers are designed for simplicity of installation and maintenance. All transformers are designed with Hermetically sealed tanks for long life and minimum oil maintenance.

The range extends from 100kVA or smaller through to 2500kVA, (3 phase) arrangements for indoor and outdoor applications, in New Zealand, Australia and the Pacific Islands.

ETEL's full range includes a model to meet your Distribution Transformer needs. Discuss your particular requirements with our Engineering team.



FEATURES

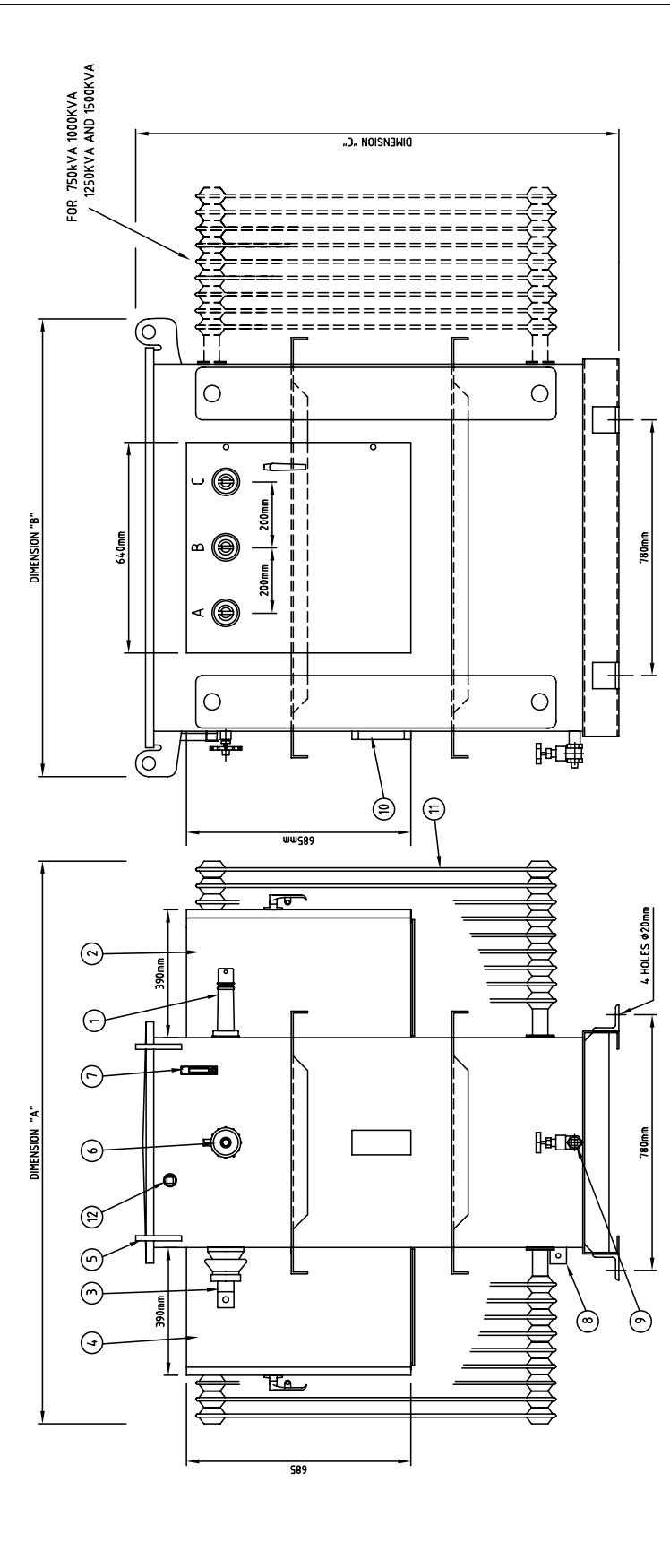
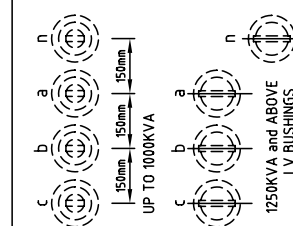
- Simple tank and terminal configurations for optimum cost efficiency
- Accessories for Transformer protection and Monitoring
- Cable Boxes, Kiosks or open bushing arrangements
- Hermetically sealed for long life
- 100 to 2500kVA
- Zinc Spray and High Build Paint system available
- Standard Transformer oil or Flameproof fluid options


TECHNICAL SPECIFICATIONS

| | |
|-------------------------------------|--|
| Core Type | : Distributed gap wound core, core type transformers |
| Electrical Steel Type | : Cold rolled, grain oriented, silicon steel sheets. |
| Tank Sealing | : Hermetically sealed (non sealed types available). |
| Oil Type | : Oil filled to BS148 and AS1767 |
| HV Volts | : 11000, 22000, 33000 standard. Others available. |
| LV Volts | : 415 - 240V Dyn11 433 - 250V Dyn11 standard, others available. |
| HV Tappings | : +5% to -7.5% up to 300kVA + 2.5 to -10% in 2.5% steps 500kVA and above. |
| Oil / Winding Rises | : 60 / 65°C |
| BIL / Power Frequency Levels | : 95kVpeak / 28kVrms 150kVpeak / 50kVrms 200kVpeak / 70kVrms |
| Maximum Operating Pressure | : 35kPA |

| ITEM | DESCRIPTION |
|------|---|
| 1 | HV BUSHING, No 1 CABLEBOX 2-PIECE, PM, CU |
| 2 | HV CABLEBOX 1KV, PARTIALLY INSULATED TO (BS 6435) |
| 3 | LV BUSHING, ESAA No.72 : 100-300kVA, ESAA No.73 : 500-1500kVA |
| 4 | LV CABLEBOX TO SUIT No.72 & No.73 BUSHINGS |
| 5 | LIFTING LUG |
| 6 | TAP SWITCH HANDLE & LOCKING BRACKET |
| 7 | OIL GAUGE |
| 8 | EARTH TERMINAL |
| 9 | DRAIN BALL VALVE 25NB FEMALE/FEMALE BRASS (500kVA & ABOVE) |
| 10 | RATING PLATE |
| 11 | RADIATORS |
| 12 | FILLER & FILTER SOCKET 25NB (500kVA & ABOVE) |

| kVA | DIM A (mm) | DIM B (mm) | DIM C (mm) | OIL LITRES | UNTANKING MASS (kg) | TOTAL MASS (kg) |
|------|------------|------------|------------|------------|---------------------|-----------------|
| 100 | 1450 | 1200 | 1100 | 325 | 375 | 950 |
| 200 | 1500 | 1250 | 1150 | 325 | 550 | 1100 |
| 300 | 1600 | 1400 | 1200 | 365 | 840 | 1500 |
| 500 | 1650 | 1450 | 1450 | 530 | 1100 | 2150 |
| 750 | 1650 | 1950 | 1650 | 795 | 1415 | 2750 |
| 1000 | 1650 | 1950 | 1650 | 750 | 1720 | 3080 |
| 1250 | 1750 | 1730 | 1700 | 1020 | 2050 | 3810 |
| 1500 | 1850 | 2120 | 1700 | 1010 | 2660 | 4100 |



| | | | |
|--|---|---|-------------------|
|  | | Distribution Transformers DRAWING No. 039.904.0104 REV E | |
| GENERAL ARRANGEMENT 100 - 1500kVA 3Φ TRANSFORMER 11kV HV CABLEBOX 4.15V LV CABLEBOX | | | |
| REV | DESCRIPTION | DRAWN | DATE |
| B | ITEM 1 CHANGED | A.A | 06/05/03 |
| C | ITEM 2 WAS AIR INSULATED | PAUL R | 26/07/06 |
| D | REVISED GA & ADDED 1250 & 1500kVA DETAILS | PAUL R | 12/07/06 |
| E | MODIFY DIM TABLE | VS | 28/06/08 |
| | | | SCALE 1:12.5 |
| | | | TOLERANCE +/- 2mm |
| | | APPD. | DATE |
| | | R.GOPALAN | 27/04/01 |
| | | CHECKED | S.ROBINSON |
| | | DATE | 27/04/01 |