

PRODUCT DATA SHEET

Revised	1
Document No.	904 - 0171

ETEL's Front Access range of ground mounted Distribution Transformers has been specifically developed to meet New Zealand conditions.

The Citypad features compact overall dimensions, including front mounted HV and LV cubicles, ideal for confined, single access positions.

Exposed radiators (where required) are employed in standard construction, providing efficient cooling performance. Alternative concealed radiators can be supplied if required.

The LV cubicle design allows for enormous flexibility in accommodating fuse gear and switch gear selection. ETEL can deliver complete, installed LV switchgear solutions to customer specification.

Factory installation of switch gear, fuse gear and street lighting accessories, etc provide a cost effective and efficient alternative to after delivery workshop assembly.

ETEL's full catalogue of Distribution Transformers includes a model to meet your Distribution Transformers need. Discuss your particular requirements with our Engineering team.

FEATURES

- Front Access HV and LV cubicles
- Compact footprint and overall size
- Integrated LV Switchgear options are available
- Hermetically sealed for long life
- 100 to 1000kVA available



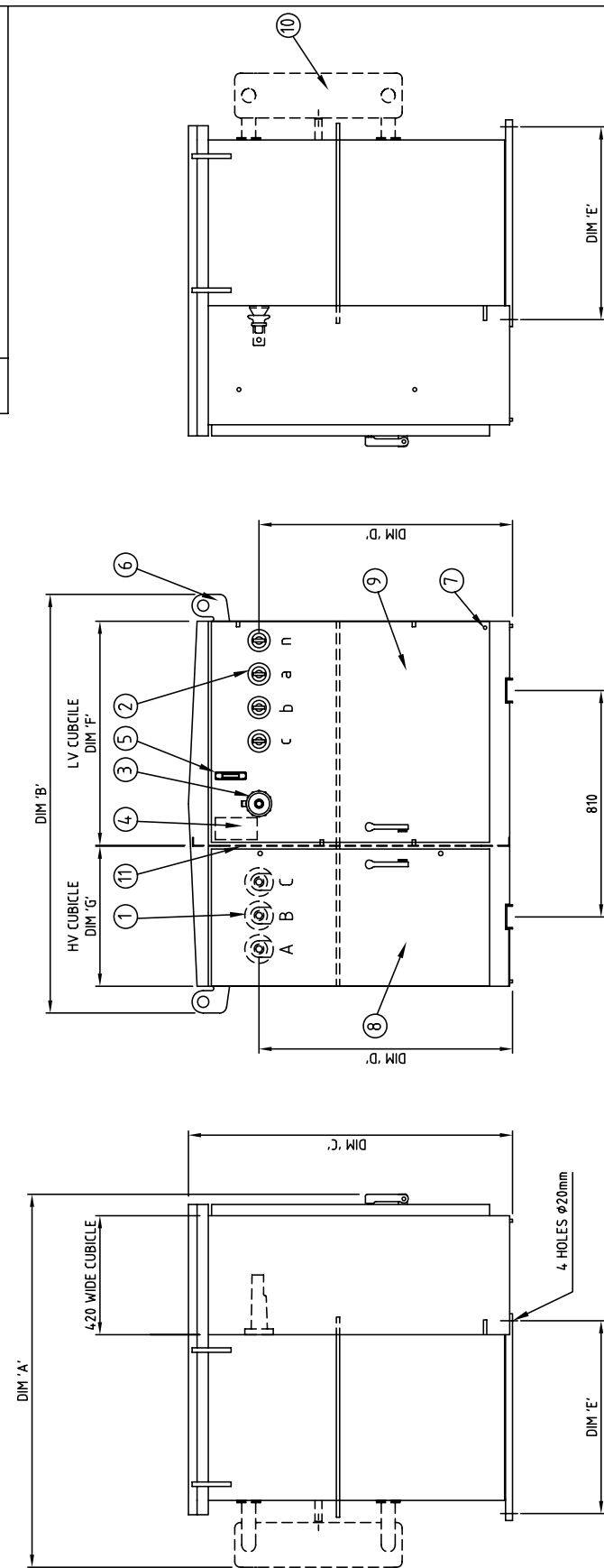
TECHNICAL SPECIFICATIONS

Core Type	: Distributed Gap Wound Core, Core Type Transformers
Electrical Steel Type	: Cold Rolled, Grain Oriented, Silicon steel Sheets.
Tank Sealing	: Hermetically sealed.
Oil Type	: Oil filled to BS148 and AS1767
KVA sizes available	: 100, 150, 200, 300, 500, 750, 1000 3 Phase
HV Volts	: 11000 or 22000 as standard
LV Volts	: 415 - 240 as standard (others available)
Connection	: Dyn11 as standard (others available)
HV Tappings	: +5% to -7.5% up to 300kVA +2.5% to -10% 500kVA as above in 2.5% steps.
Oil / Winding Rises	: 60 / 65°C
BIL / Power Frequency Levels	: 95kVpeak / 28kVrms 150kVpeak / 50kVrms
Maximum Operating Pressure	: 35kPA

ITEM	DESCRIPTION
1	HV 11kV SHROUDED BUSHING
2	LV BUSHING 415V ESAA No.72 (500kVA - No. 73)
3	TAP SWITCH HANDLE & LOCKING BRACKET
4	RATING PLATE
5	OIL GAUGE
6	LIFTING LUG
7	EARTH STUD M12 STAINLESS STEEL
8	HV COMPARTMENT
9	LV COMPARTMENT
10	COOLING FINS (IF REQUIRED - 300kVA and 500kVA)
11	COMPARTMENT SEGREGATION

kVA	DIM A	DIM B	DIM C	DIM D	DIM E	DIM F	DIM G	OIL Litres	UNTANKING MASS kg	TOTAL kg
100	1060	1520	1200	915	550	800	500	460	470	1200
200	1070	1520	1200	915	620	800	500	470	620	1550
300	1350	1520	1200	915	690	800	500	500	780	1560
500	1560	1600	1480	1210	730	850	550	820	1030	2450

NOTE : FOR 750kVA AND 1000kVA - DETAILS ON REQUEST.



REV	DESCRIPTION	DRAWN	DATE	APPD.	DRAWN	DATE	APPD.
B	MODIFY DIM TABLE	VS	24/04/08		NILESH	31/05/04	
					CHECKED		
					DATE		
					SCALE	NTS	
					TOLERANCE	N.A.	

ETEL	
Distribution Transformers	
DRAWING No 039.904.0171	REV B

PROPOSED GENERAL ARRANGEMENT	
FRONT ACCESS KIOSK	